

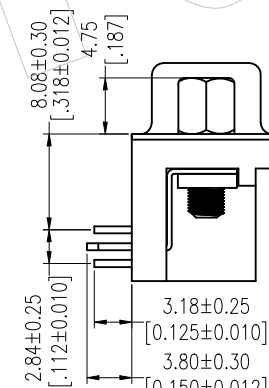
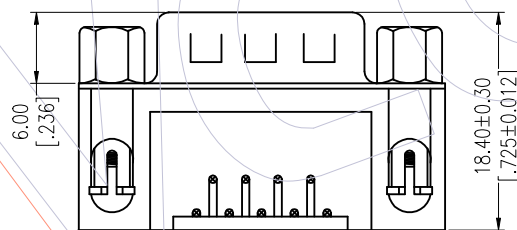
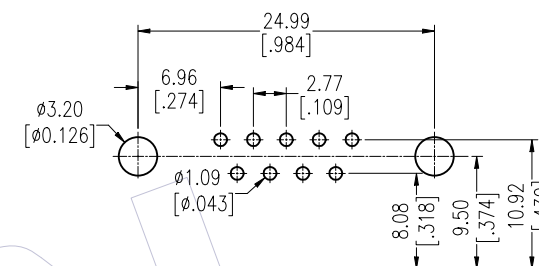
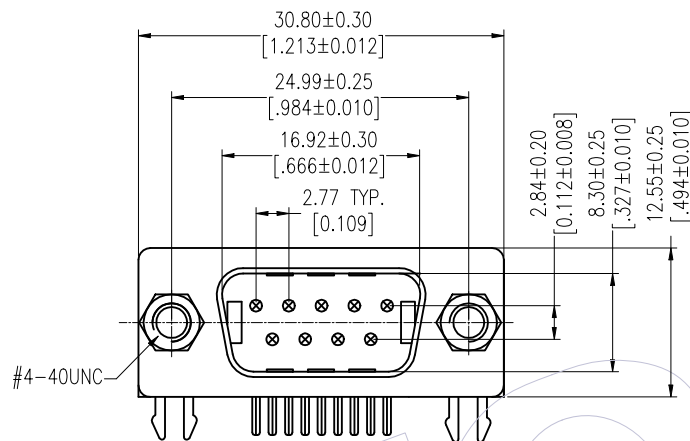
HSF

NOTES:

Current Rating:3.0A AMP
 Contact Resistance:25milliohm Max
 Withstand Voltage:500V AC/Minute
 Insulation Resistance:1000Megohm Min
 Operation Temperature:-55°C to +105°C

Housing Material:PBT+30%GF(UL94V-0)
 Contact Material:Copper alloy
 Contact plating:Au/Sn over Ni Plating
 Shell:Cold Roller Steel,Ni or Sn Plated
 Revit/Harpoon:Brass,Tin Over Ni Plated
 Screw:Brass,Ni Plated

Recommended P. C. B Layout (Top Side)
 (PCB BOARD TOLERANCE ± 0.05)



Ordering Information

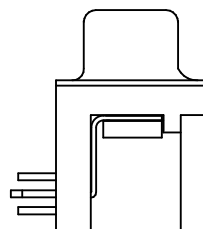
6223- 09 M X N XX B 01

No. of Pins: 9P
 Product Type

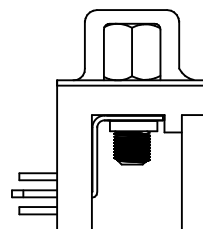
W=With Revit With Screw
 M=With Revit Without Screw
 S=No Revit Lock With Screw
 H=With Revit With Screw (Don't lock)

Contact Plating:
 G0=Gold Flash
 G1=3u"Gold
 G2=5u"Gold
 G3=10u"Gold
 G4=15u"Gold
 G5=30u"Gold
 S0=Gold Flash/Tin
 S1=3u"Gold/Tin
 S2=5u"Gold/Tin
 S3=10u"Gold/Tin
 S4=15u"Gold/Tin
 S5=30u"Gold/Tin
 SN=Tin

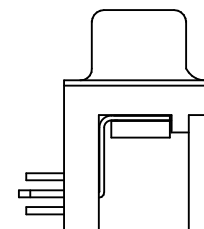
Insulator Color:
 B= Black



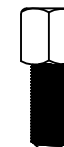
6223-09MMNXXX01




6223-09MSNXXX01



6223-09MHNXXX01



6223-09MWNXXX01

				OPERATION	DRAW	DATE	SCALE	FIT	PART NO.	 Http: www.wcon.com WCON-Dongguan Tel: +86 769 85358920 WCON-Kunshan Tel: +86 512 57468408 Fax: +86 769 85358915 Fax: +86 512 57468468 E-mail: sales@wcon.com E-mail: salesks@wcon.com
				X.X ±0.40	Allen	2014/02/28	UNIT	mm	6223-09MXNXXB01	
				X.XX ±0.25	CHECK	DATE	SIZE	inch	TITLE:	
A0	2014/02/28		NEW	X.XXX ±0.15	APPROVE	DATE	SHEET	1/1	D-SUB MALE CONNECTOR 9P 8.08 FOOTPRINT RIGHT ANGLE TYPE	
REV	DATE		MODIFICATION DESCRIPTION	Angle ± 3°			PROJ.	Customer NO.		