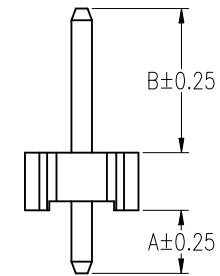
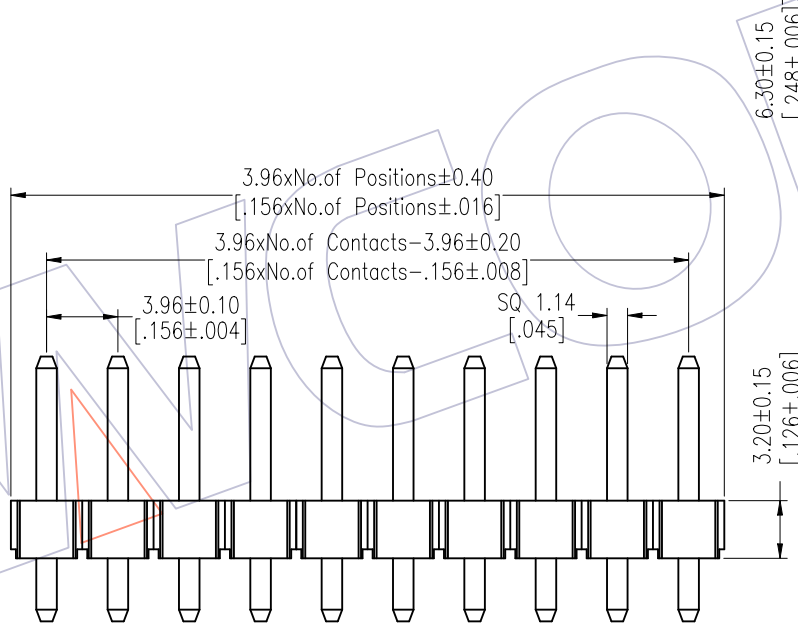
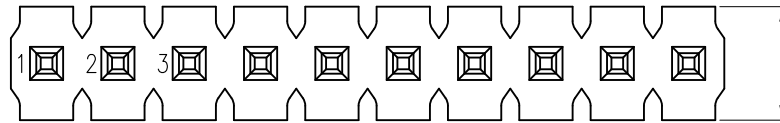
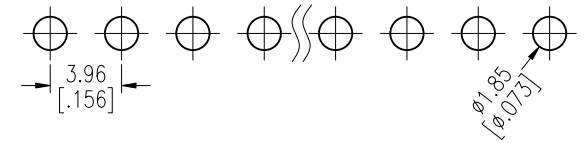


# HSF

Recommended P.C.B Layout (Top Side)  
(PCB BOARD TOLERANCE±0.05)

NOTES:  
 Rated Current:7.0AMP.  
 Contact Resistance:20mΩ Max.  
 Withstand Voltage:1000V AC/DC  
 Insulation Resistance:1000MΩ Min.  
 Operation Temperature:-40°C to +105°C

Contact Material:Brass  
 Contact Plating:Sn Over Ni  
 Insulator Material:LCP+30%G.F UL94V-0 BK



## Ordering Information

1832-11 XX XX S XXX D 0 XX

No. of Pins	Contact Plating	Pin Length	Insulator	Packing	Series No.
02~20	SN=Tin SM=Matte Tin	L=A+B+3.2 Std:147=14.7	D=LCP	0=PE Bag	01~99

Item	Pin Length	A	B	Mating
Standard	14.7	3.50	8.00	2889
Alternate				

REV	DATE	MODIFICATION DESCRIPTION	CHANGE	OPERATION	DRAW	DATE	SCALE	Fit	PART NO.
A1	2018/01/23	MODIFY PART NO.	-----	X.X ±0.40	William Chen	2018/01/23	UNIT	mm [inch]	1832-11XXXXSXXXDXXX
A0	2012/06/25	NEW	-----	X.XX ±0.25	CHECK	DATE	SIZE	A4	TITLE:
				X.XXX ±0.15	APPROVE	DATE	SHEET	1/1	3.96 Pin Header, SINGLE ROW, S/T, H=3.2
				Angle ± 3'			PROJ.		Customer NO.
				DIM TOL					

# WCON

Http: www.wcon.com

WCON-Dongguan Tel: +86 769 85358920 Fax: +86 769 85358915 E-mail: sales@wcon.com	WCON-Kunshan Tel: +86 512 57468408 Fax: +86 512 57468468 E-mail: salesks@wcon.com
---	--