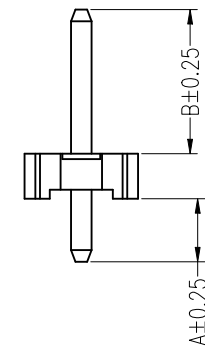
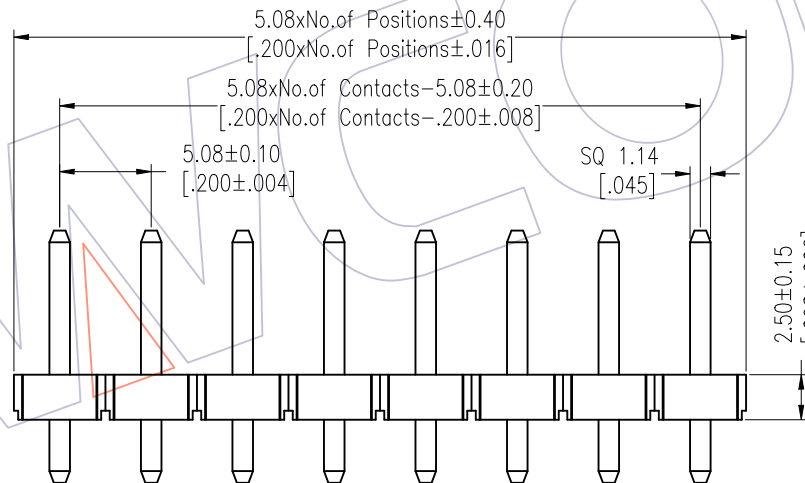
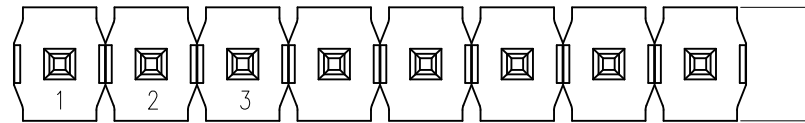
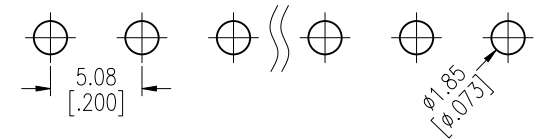


HSF

Recommended P.C.B Layout (Top Side)
(PCB BOARD TOLERANCE±0.05)

NOTES:
 Rated Current:7.0AMP.
 Contact Resistance:20mΩ Max.
 Withstand Voltage:1000V AC/DC
 Insulation Resistance:1000MΩ Min.
 Operation Temperature:-40℃ to +105℃

Contact Material:Brass
 Contact Plating:Au or Sn Over Ni
 Insulator Material:LCP+30%G.F UL94V-0 BK



Ordering Information

1925-11 XX XX S XXX D 0 XX

No.of Pins Contact Plating Pin Length Insulator Packing Series No.
 01~20 G0=Gold Flash L=A+B+2.5 D=LCP 0=PE Bag 01~99
 SN=Tin Std:140=14.0
 SM=Matte Tin

| Item | Pin Length | A | B | Mating |
|-----------|------------|------|------|--------|
| Standard | 14.0 | 3.50 | 8.00 | 2989 |
| Alternate | | | | |

| REV | DATE | MODIFICATION DESCRIPTION | CHANGE | OPERATION | DRAW | DATE | SCALE | Fit | PART NO. |
|-----|------------|--------------------------|--------|-------------|--------------|------------|-------|-----------|--|
| A2 | 2018/01/26 | MODIFY PART NO. | ----- | X.X ±0.40 | William Chen | 2018/01/26 | UNIT | mm [inch] | 1925-11XXXXXXXDXXX |
| A1 | 2013/01/08 | MODIFY | ----- | X.XX ±0.25 | CHECK | DATE | SIZE | A4 | TITLE: 5.08 Pin Header, SINGLE ROW, S/T, H=2.5 |
| A0 | 2012/07/03 | NEW | ----- | X.XXX ±0.15 | APPROVE | DATE | SHEET | 1/1 | Customer NO. |
| | | | | Angle ± 3' | | | PROJ. | | |
| | | | | DIM TOL | | | | | |

WCON
 Http: www.wcon.com
 WCON-Dongguan Tel: +86 769 85358920
 WCON-Kunshan Tel: +86 512 57468408
 Fax: +86 769 85358915
 Fax: +86 512 57468468
 E-mail: sales@wcon.com
 E-mail: salesks@wcon.com