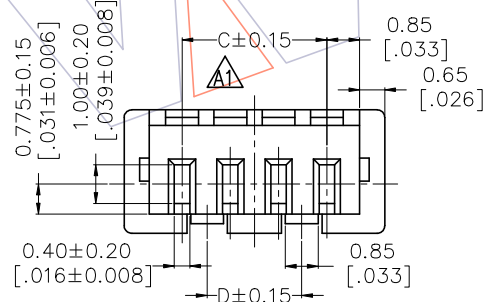
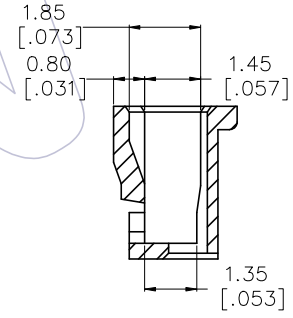
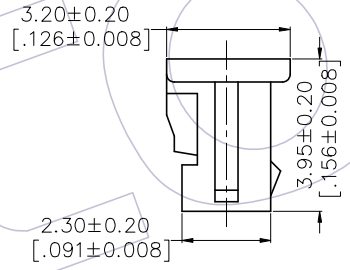
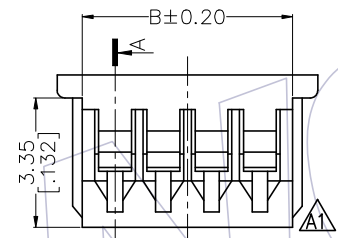
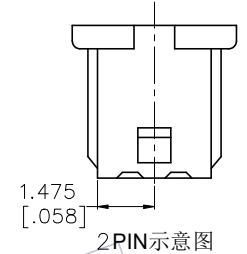
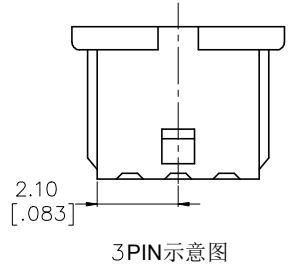
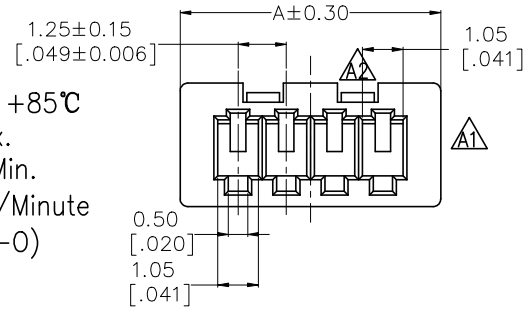


NOTES:
 Current Rating: 1.0A AC/DC
 Voltage Rating: 125V AC/DC
 Temperature Range: -40°C to +85°C
 Contact Resistance: 20mΩ Max.
 Insulation Resistance: 100MΩ Min.
 Withstanding Voltage: 250V AC/Minute
 Insulator Material: PA66(UL94V-0)




Ordering Information

WF1251-H XX W 0 1

Terminal Shape: H:HOUSING
 No. of Pins: 02-15P
 Colour: W:White
 Packaging: 0=PE Bag

15	20.50[0.807]	19.20[0.756]	17.50[0.689]	16.20[0.638]
14	19.25[0.758]	17.95[0.707]	16.25[0.640]	14.95[0.589]
13	18.00[0.709]	16.70[0.657]	15.00[0.591]	13.70[0.539]
12	16.75[0.659]	15.45[0.608]	13.75[0.541]	12.45[0.490]
11	15.50[0.610]	14.20[0.559]	12.50[0.492]	11.20[0.441]
10	14.25[0.561]	12.95[0.510]	11.25[0.443]	9.95[0.392]
9	13.00[0.512]	11.70[0.461]	10.00[0.394]	8.70[0.343]
8	11.75[0.463]	10.45[0.411]	8.75[0.344]	7.45[0.293]
7	10.50[0.413]	9.20[0.362]	7.50[0.295]	6.20[0.244]
6	9.25[0.364]	7.95[0.313]	6.25[0.246]	4.95[0.195]
5	8.00[0.315]	6.70[0.264]	5.00[0.197]	3.70[0.146]
4	6.75[0.266]	5.45[0.215]	3.75[0.148]	2.45[0.096]
3	5.50[0.217]	4.20[0.165]	2.50[0.098]	NA
2	4.25[0.167]	2.95[0.116]	1.25[0.049]	NA
PIN数	A	B	C	D

				OPERATION	DRAW	DATE	SCALE	FIT	PART NO.	 Http: www.wcon.com	
A2	2019/07/15	MODIFY THE DRAWING	—	X.X ±0.40	Ding	2019/07/15	UNIT	mm inch	WF1251-HXXX01		
A1	2013/05/17	MODIFY THE DRAWING	—	X.XX ±0.25	CHECK	DATE	SIZE	A4	TITLE:	WCON-Dongguan Tel: +86 769 85358920 WCON-Kunshan Tel: +86 512 57468408 Fax: +86 769 85358915 E-mail: sdles@wcon.com	
AO	2012/09/04	NEW	—	X.XXX ±0.15	APPROVE	DATE	SHEET	1/1	"M"TYPE 1.25 WAFER HOUSING		
REV	DATE	MODIFICATION DESCRIPTION	CHANGE	Angle DIM	± 3' TOL		PROJ.		Customer NO.	E-mail: sdlesks@wcon.com	