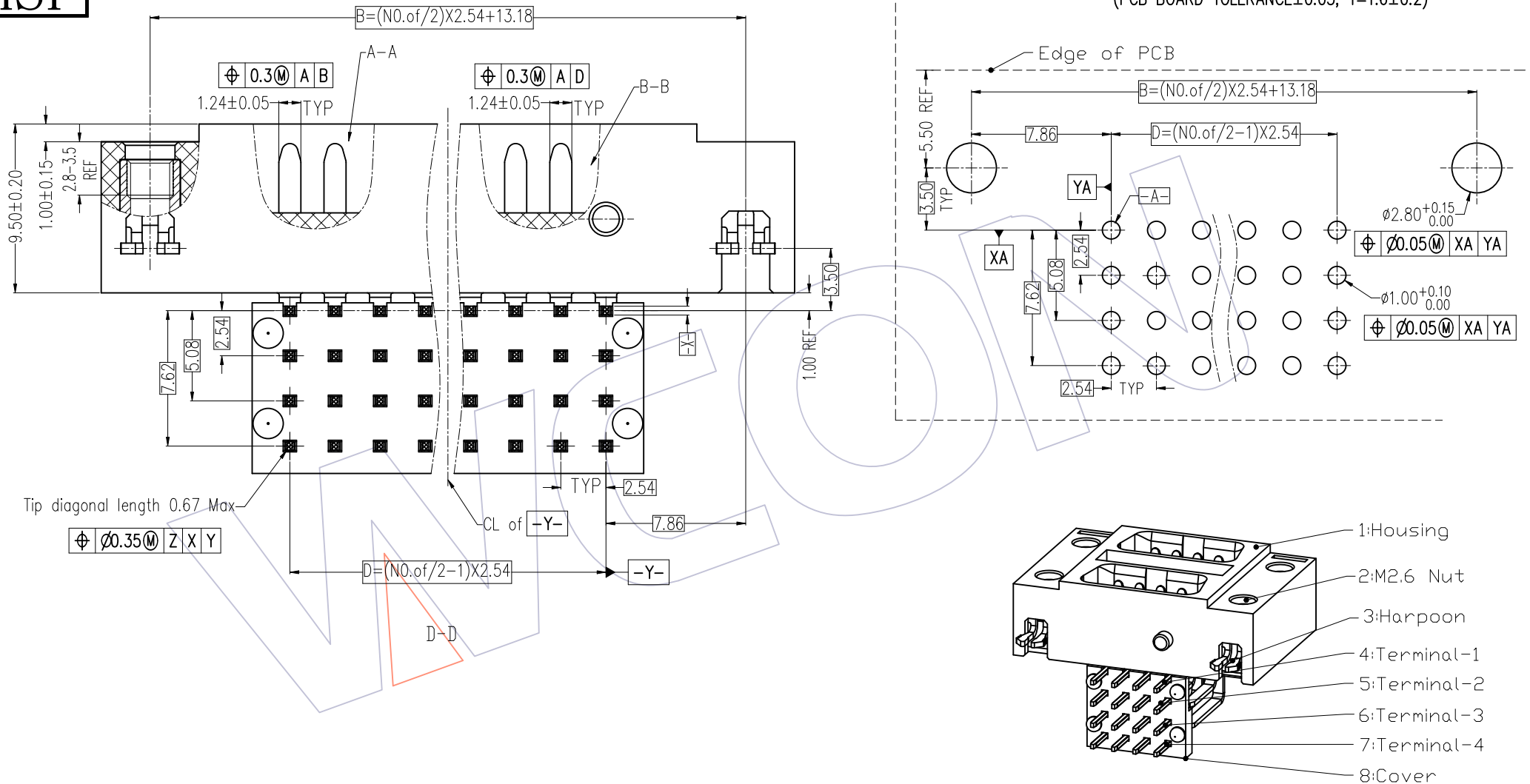


HSF

Recommended P.C.B Layout (Top Side)
(PCB BOARD TOLERANCE ±0.05, T=1.6±0.2)



REV	DATE	MODIFICATION DESCRIPTION	CHANGE
A0	2022.08.30	NEW	Houfu Peng

OPERATION	±0.40
x.x	±0.25
x.xx	±0.15
x.xxx	±0.15
Angle	± 3'
DIM	TOL

DRAW	Houfu Peng	DATE	2022.08.30
CHECK		DATE	
APPROVE		DATE	

SCALE	FIT
UNIT	mm
SIZE	A4
SHEET	2/2
PROJ.	◆

PART NO.	6340-2XXMRSXMWT01
TITLE:	2.54mm DFCN Connector Male, Double-deck 90° DIP (Standard Type) With Metal Harpoon And M2.6 Nut
Customer NO.	

WCON
Http: www.wcon.com

WCON-Dongguan	WCON-Kunshan
Tel: +86 769 85358920	Tel: +86 512 57468408
Fax: +86 769 85358915	Fax: +86 512 57468468
E-mail: sales@wcon.com	E-mail: salesks@wcon.com