

HSF

NOTES:

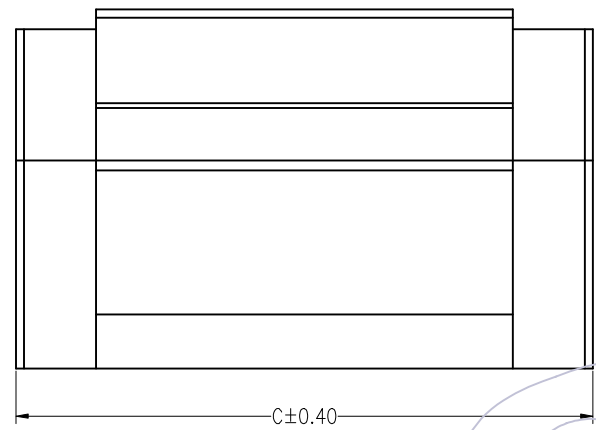
1. MATERIAL:
 - 1.1 HOUSING:PA66+30%GF(UL94V-0)
 - 1.2 COVER:PA66+30%GF(UL94V-0)
 - 1.3 TERMINAL:BRASS,MATTE TIN PLATED OVER NICKEL
2. ELECTRICAL:
 - 2.1 CURRENT RATING: 8 A
 - 2.2 VOLTAGE RATING: 300 V
 - 2.3 CONTACT RESISTANCE:8 mΩ MAX.
 - 2.4 DIELECTRIC WITHSTANDING VOLTAGE:2000V AC
 - 2.5 INSULATION RESISTANCE:1000 MΩ MIN
3. ENVIRONMENTAL:
 - 3.1 OPERATION TEMPERATURE:-40°C TO +105°C
4. No.OF POSITIONS:2~20
5. ALL MATERIALS SHOULD BE COMPLIANT TO ROHS

Ordering Information:

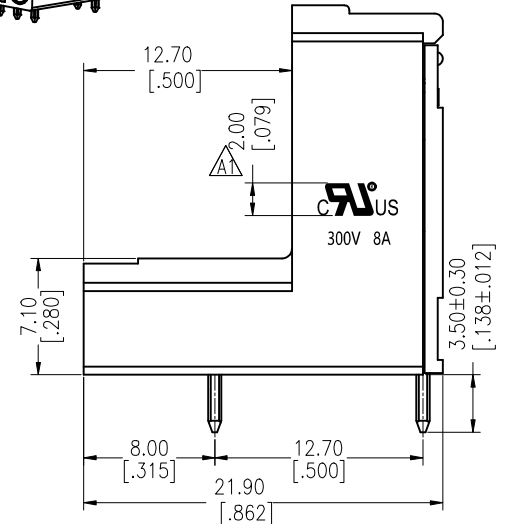
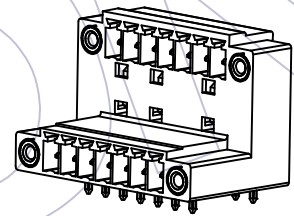
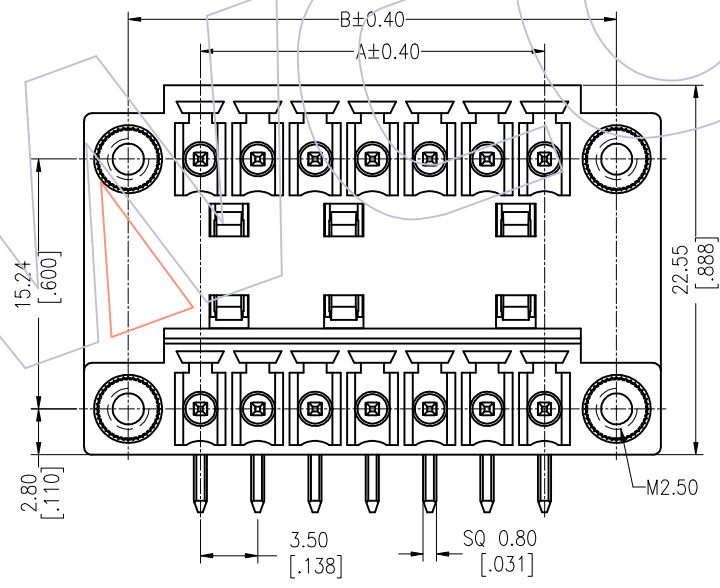
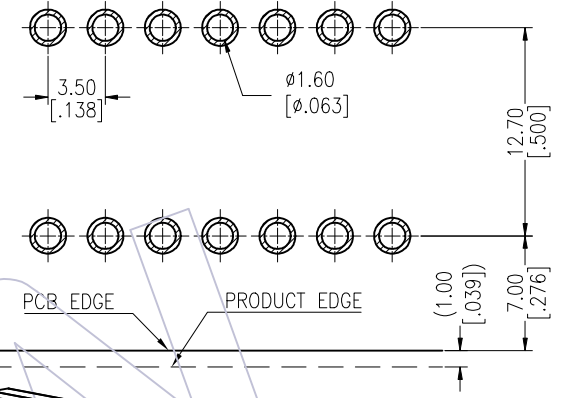
P M 350 - 3 R XX A SM 2 N

M=Male
 Pitch 350=3.50
 No.of Pins (Per Row) 02-20P
 Contact Plated SM=Matte Tin
 Color A=Green
 N=W/O WCON
 Series No.

PIN	DIM.A	DIM.B	DIM.C	PIN	DIM.A	DIM.B	DIM.C
02	3.50	12.30	17.70	12	38.50	47.30	52.70
03	7.00	15.80	21.20	13	42.00	50.80	56.20
04	10.50	19.30	24.70	14	45.50	54.30	59.70
05	14.00	22.80	28.20	15	49.00	57.80	63.20
06	17.50	26.30	31.70	16	52.50	61.30	66.70
07	21.00	29.80	35.20	17	56.00	64.80	70.20
08	24.50	33.30	38.70	18	59.50	68.30	73.70
09	28.00	36.80	42.20	19	63.00	71.80	77.20
10	31.50	40.30	45.70	20	66.50	75.30	80.70
11	35.00	43.80	49.20				



Recommended P.C.B Layout(Top Side)
 (PCB BOARD TOLERANCE±0.05)



REV	DATE	MODIFICATION DESCRIPTION	CHANGE
A1	2020/11/19	ADD UL LOGO	XSR
A0	2013/09/17	NEW	

OPERATION	DRAW	DATE	SCALE	FIT
x.X ±0.40	XSR	2020/11/19	UNIT mm	
x.XX ±0.25	CHECK	DATE	SIZE A4	
x.XXX ±0.15	APPROVE	DATE	SHEET 1/1	
Angle ± 3'			PROJ.	
DIM TOL				

PART NO.	TITLE:	Customer NO.
PM350-3RXXASM2N	3.50mm Pitch Male Pluggable Terminal Blocks Double Stagger Tier W/T Flange	

WCON
 Http: www.wcon.com

WCON-Dongguan Tel: +86 769 85358920 Fax: +86 769 85358915 E-mail: sales@wcon.com	WCON-Kunshan Tel: +86 512 57468408 Fax: +86 512 57468468 E-mail: sales@wcon.com
-------------------------------------------------------------------------------------------	------------------------------------------------------------------------------------------