

HSF

NOTES:
 Current Rating: 2.0AMP
 Contact Resistance: 20mΩ Max
 Withstand Voltage: 500V AC/DC
 Insulation Resistance: 1000MΩ Min
 Operation Temperature: -40℃ to +105℃

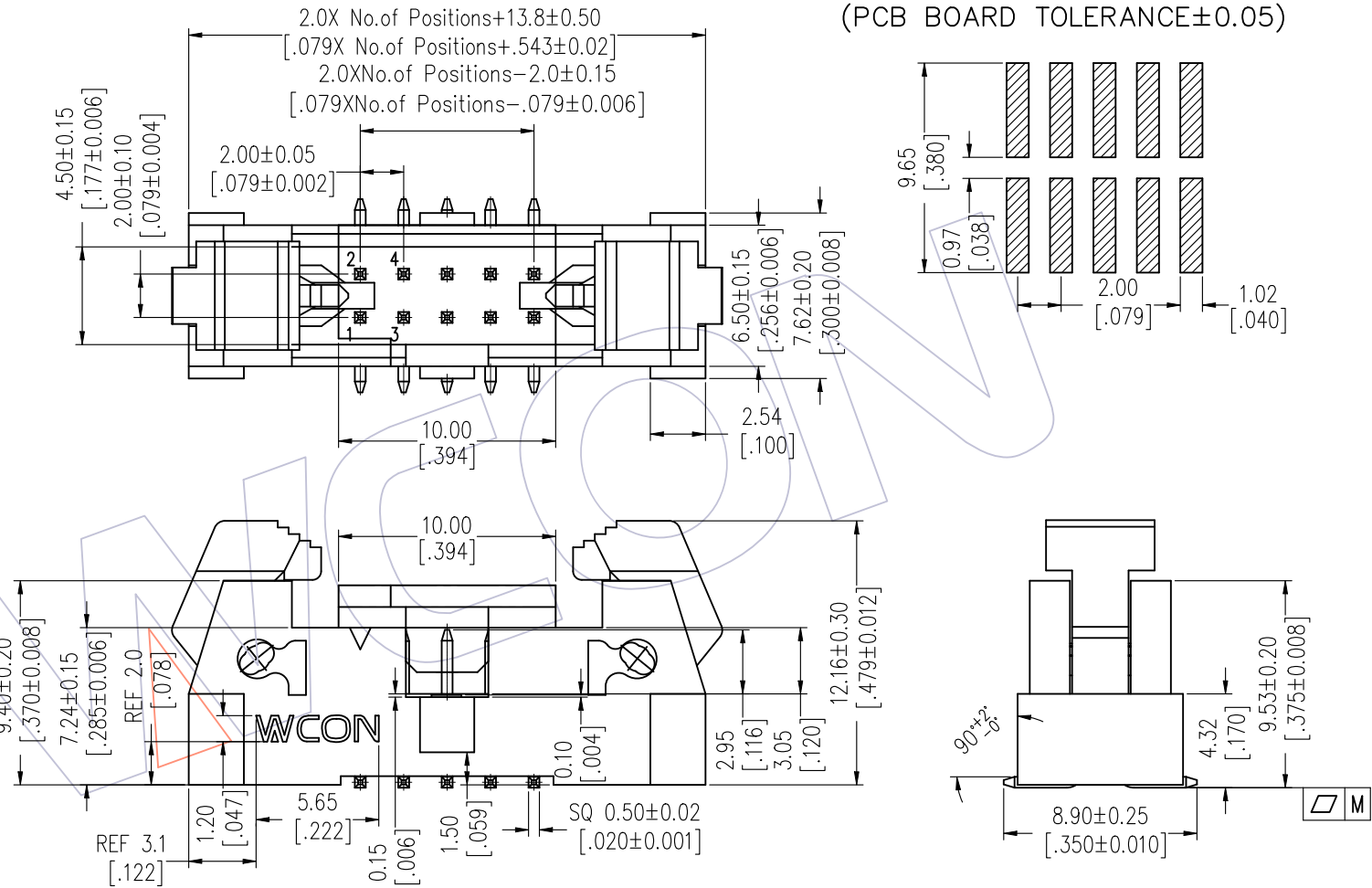
Contact Material: Brass
 Contact plating: Au Or Sn over Ni
 Insulator Material: LCP+30%G.F UL94V-0

Recommended P.C.B Layout(Top Side)
 (PCB BOARD TOLERANCE±0.05)

Ordering Information

3221-XX M XX B S X 1 W

No. of Pins	Contact Plating	Insulator Color	Packing
06 30	G0=Gold Flash	B=Black	T=Tube
08 34	G3=10u"Gold		R=Reel+Cap
10 40	G4=15u"Gold		
14 44	G5=30u"Gold		
16 50	S0=Gold Flash/Tin		
20 60	S3=10u"Gold/Tin		
24 64	S4=15u"Gold/Tin		
26	S5=30u"Gold/Tin		
	SN=Tin		



Item	Pitch	Mating
Standard	2.00	5225
Alternate		

PIN(PerRow)	6-20P		24-40P		44-64P	
	M	0.10	0.12	0.15		

REV	DATE	MODIFICATION DESCRIPTION	CHANGE	OPERATION	DRAW	DATE	SCALE	FIT	PART NO.
A1	2023/02/17	Add Flatness	DuYing	x.x ±0.40	Du Ying	2023/02/17	UNIT mm		3221-XXMXXBSX1W
A0	2020/06/09	NEW	DuYing	x.xx ±0.25	CHECK	DATE	SIZE A4		TITLE: 2.0mm Ejector Header "S" Type SMT
				x.xxx ±0.15	APPROVE	DATE	SHEET 1/1		Customer NO.
				Angle ± 3°			PROJ.		
				DIM TOL					

WCON
 Http: www.wcon.com

WCON-Dongguan WCON-Kunshan
 Tel: +86 769 85358920 Tel: +86 512 57468408
 Fax: +86 769 85358915 Fax: +86 512 57468468
 E-mail: sales@wcon.com E-mail: salesks@wcon.com