

# HSF

## NOTES:

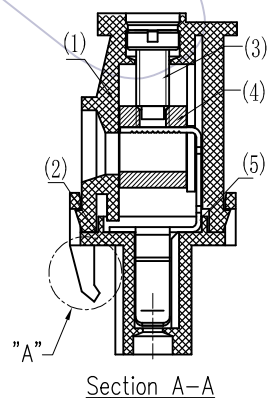
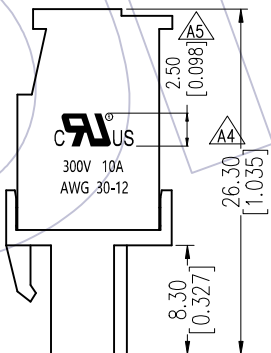
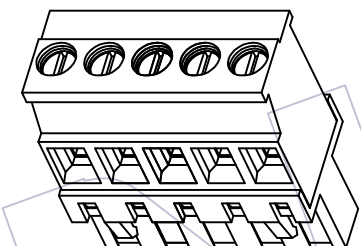
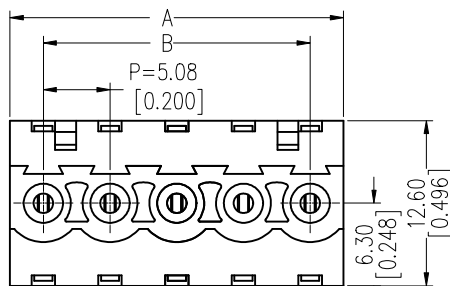
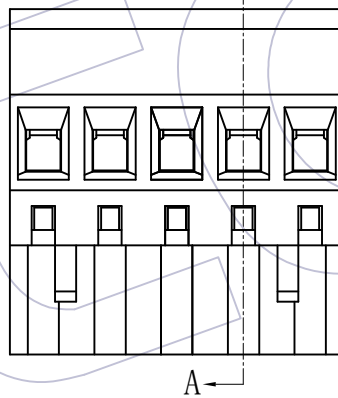
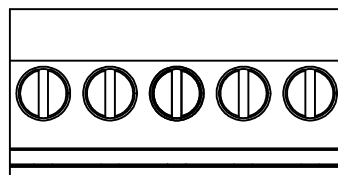
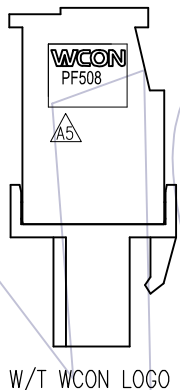
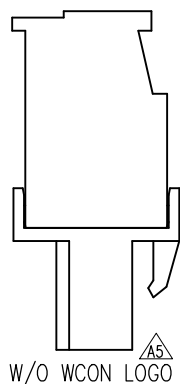
Current Rating: 10A  
 Voltage Rating: 300V  
 Contact Resistance: 8milliohm Max  
 Withstand Voltage: AC2000V  
 Insulation Resistance: 1000Megohm Min  
 Screw Torque: 4.4 lbf.in  
 Wire range: 12-30AWG  
 Operation Temperature: -40°C to +105°C  
 2P With 1 RAMP Locking "A"  $\triangle A3$

## Ordering Information:

**P F 508- B XX A SM N I  $\triangle A5$  N**

F=Female Pitch No. of Pins Contact Plated Blank=W/T WCON Logo  
 508=5.08 02-24P SM=Matte Tin N=W/O WCON Logo  
 Color Type  
 A=Green N=W/O Two Side Screw

13P	66.04 ± 0.30	60.96 ± 0.30			
12P	60.96 ± 0.30	55.88 ± 0.30	24P	121.92 ± 0.50	116.84 ± 0.50
11P	55.88 ± 0.30	50.80 ± 0.30	23P	116.84 ± 0.50	111.76 ± 0.50
10P	50.80 ± 0.30	45.72 ± 0.30	22P	111.76 ± 0.50	106.68 ± 0.50
9P	45.72 ± 0.30	40.64 ± 0.30	21P	106.68 ± 0.50	101.60 ± 0.50
8P	40.64 ± 0.30	35.56 ± 0.30	20P	101.60 ± 0.50	96.52 ± 0.50
7P	35.56 ± 0.20	30.48 ± 0.20	19P	96.52 ± 0.40	91.44 ± 0.40
6P	30.48 ± 0.20	25.40 ± 0.20	18P	91.44 ± 0.40	86.36 ± 0.40
5P	25.40 ± 0.20	20.32 ± 0.20	17P	86.36 ± 0.40	81.28 ± 0.40
4P	20.32 ± 0.20	15.24 ± 0.20	16P	81.28 ± 0.40	76.20 ± 0.40
3P	15.24 ± 0.20	10.16 ± 0.20	15P	76.20 ± 0.40	71.12 ± 0.40
2P	10.16 ± 0.20	5.08 ± 0.10	14P	71.12 ± 0.40	66.04 ± 0.40
PIN	A	B	PIN	A	B



ITEM	品名	料号	数量	材料
(5)	Contact	TPT051-PSM001	N	C5191R-H T=0.4mm
(4)	Pin Block	BL025-1SN101	N	C3604
(3)	Screw	MA025-1SXX01	N	C1018
(2)	Cover	XPF508-XXB1XN3(N)	1	PA66 UL94-V0
(1)	Housing	XPF508-XXB1XN2(N)	1	PA66 UL94-V0

REV	DATE	MODIFICATION DESCRIPTION	CHANGE	OPERATION	DRAW	DATE	SCALE	FIT	PART NO.	TITLE:	Customer NO.	WCON	
A5	2020/08/03	ADD LOGO; ADD W/O LOGO P/N $\triangle A5$	XSR	OPERATION	DRAW	2020/08/03	UNIT	mm	PF508-BXXASMN1(N) $\triangle A1 \triangle A3$			5.08mm Pitch Female Pluggable Terminal Blocks	
A4	2019/06/05	Modify 26.0 to 26.30 $\triangle A4$	XSR	x.x ±0.40	CHECK		SIZE	A4	Http: www.wcon.com		WCON-Kunshan		
A3	2015/12/15	Modify $\triangle A3$	XSR	x.xx ±0.25			SHEET	1/1	Tel: +86 769 85358920		Tel: +86 512 57468408		
A0	2011/06/08	NEW		x.xxx ±0.15	APPROVE		PROJ.		Fax: +86 769 85358915		Fax: +86 512 57468468		
				Angle ± 3°					E-mail: sales@wcon.com		E-mail: salesks@wcon.com		
				DIM TOL									