

# HSF

Remarks: this two place measurement 40PIN for 0.25max

Recommended P.C.B Layout (Top Side)  
(PCB BOARD THICKNESS 1.0~1.6±0.05)

NOTES:  
Current Rating:3A  
Voltage Rating:250V/AC  
Contact Resistance:20mΩ Max.  
Withstand Voltage:1000V AC  
Insulation Resistance:100MΩ Min.  
Operation Temperature:-40°C to +125°C

Insulator Material:LCP,UL94V0,BLACK  
Contact Material:Copper Alloy  
Contact plating:  
Gold plated 0.38um Min in lacated area over Nickel  
Tin plated 2.0um Min in all over product

## Ordering Information

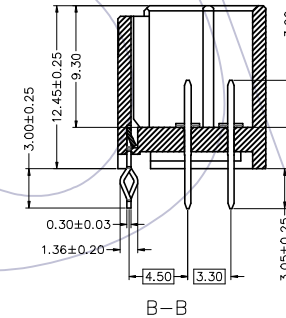
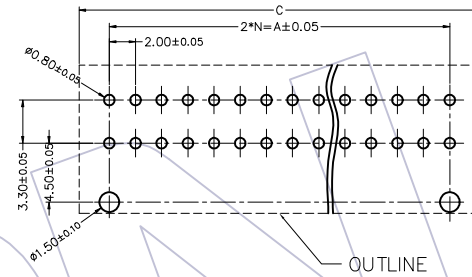
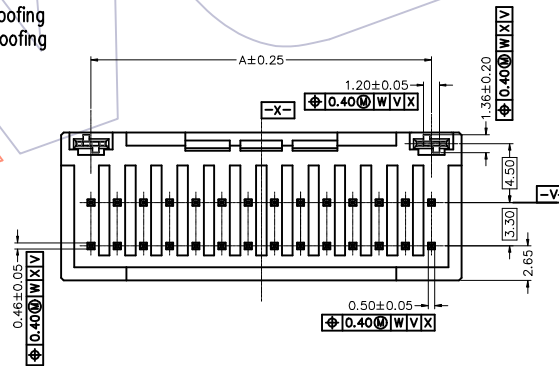
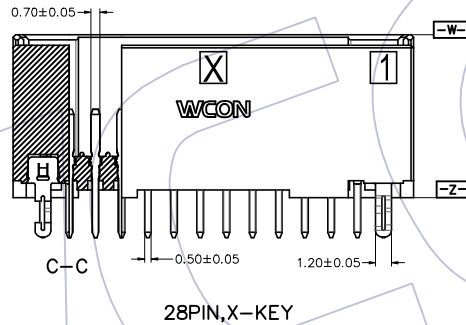
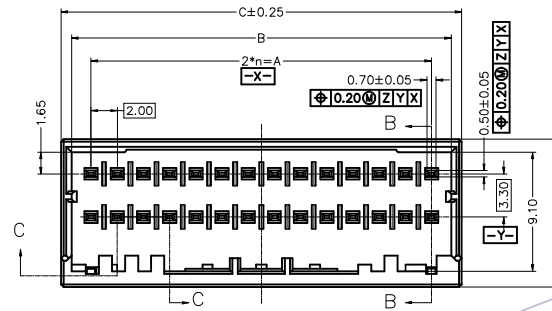
WD 200 0-2 WS XX XX X T XX W

Pitch Code:  
200= 2.00mm  
Type Code:  
0= Series  
Bay number:  
2=2 Row  
Type :  
WS= 180° DIP  
Pin NO:  
5=5PIN 9=9Pin 10=10Pin 11=11PIN  
12=12Pin 13=13Pin 14=14PIN  
15=15Pin 16=16Pin  
17=17PIN 20=20Pin

Wcon Logo:  
W= Whit LOGO  
Blank: without logo  
01= X Fool-proofing  
02= Y Fool-proofing

Packing:  
T=TuBe  
Housing Colour  
B=Black  
T=Natural  
Y=Yellow  
R=Red

Contact Plating:  
W4=Sel. 15U Au /Matte Sn  
SN=Sn plated



WD2000-2WS20XXXXT02(W)	40	Y	19	38.0	41.0	42.6	
WD2000-2WS20XXXXT01(W)	40	X	19	38.0	41.0	42.6	
WD2000-2WS17XXXXT02(W)	34	Y	16	32.0	35.0	36.6	
WD2000-2WS17XXXXT01(W)	34	X	16	32.0	35.0	36.6	
WD2000-2WS16XXXXT01(W)	32	X	15	30.0	33.0	34.6	
WD2000-2WS15XXXXT01(W)	30	X	14	28.0	31.0	32.6	
WD2000-2WS14XXXXT01(W)	28	X	13	26.0	29.0	30.6	
WD2000-2WS13XXXXT01(W)	26	X	12	24.0	27.0	28.6	
WD2000-2WS12XXXXT01(W)	24	X	11	22.0	25.0	26.6	
WD2000-2WS11XXXXT01(W)	22	X	10	20.0	23.0	24.6	
WD2000-2WS10XXXXT01(W)	20	X	9	18.0	21.0	22.6	
WD2000-2WS09XXXXT01(W)	18	X	8	16.0	19.0	20.6	
WD2000-2WS05XXXXT01(W)	10	X	4	8.0	11.0	12.6	
	P/N	PIN	KEY	n	A	B	C

REV	DATE	MODIFICATION DESCRIPTION	CHANGE	DIM	TOL	APPROVE	DATE	PROJ.	SCALE	Fit	PART NO.	TITLE:	Customer NO.
A3	2023/10/31	update content	KEVIN	OPERATION		DRAW	DATE				WD2000-2WSXXXXXTXX(W)		
A2	2023/08/02	Increase pcb thickness size recommendation	KEVIN	x.x	±0.40	KEVIN_XIN	2023/10/31		UNIT	mm			
A1	2023/07/19	Increase graphic	KEVIN	x.xx	±0.25	CHECK	DATE		SIZE	A4			
A0	2021/11/20	NEW	KEVIN	x.xxx	±0.15	APPROVE	DATE		SHEET	1/5			
				Angle	± 3°				PROJ.				

**WCON**  
Http: www.wcon.com

WCON-Dongguan  
Tel: +86 769 85358920  
Fax: +86 769 85358915  
E-mail: sales@wcon.com

WCON-Kunshan  
Tel: +86 512 57468408  
Fax: +86 512 57468468  
E-mail: salesks@wcon.com