

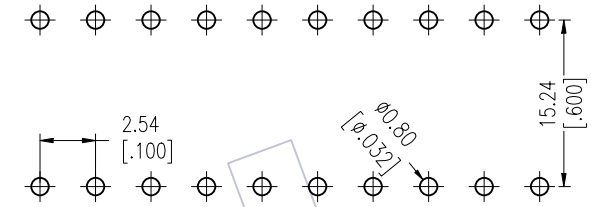
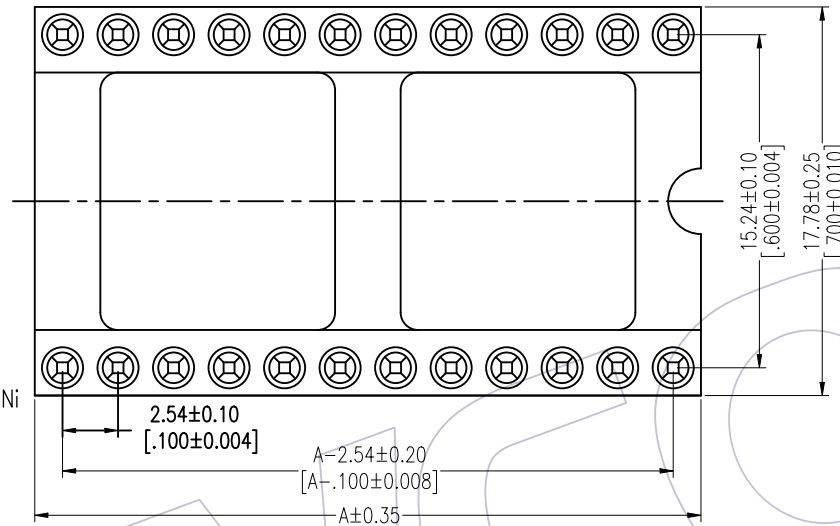
HSF

TECHNICAL SPECS:

Current Rating: 1.0AMP
 Contact Resistance: 10mΩ Max
 Dielectric Strength: Min 1000V_{RMS}
 Mechanical Life: Min 100 cycles
 Mating Pin: Ø0.40 to Ø0.56mm
 Forces: (polished steel gauge Ø0.43mm)
 Insertion: 200g Max/Pin, Withdrawal: 60g Min/Pin
 Operation Temperature: -40°C to +105°C

Sleeve: Brass CuZn36Pb3(C36000), Sn over Ni
 Contact Clip(4 finger): BeCu(C17200), Au or Sn over Ni
 Insulator Material: PPS+30%G.F(UL94V-0)
 24P~32P Insulators with center one bar
 36P~48P Insulators with center two bar

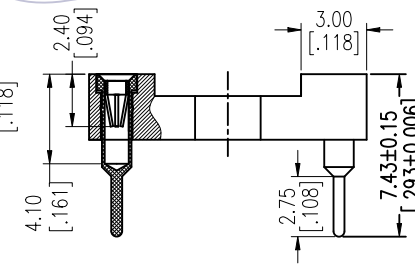
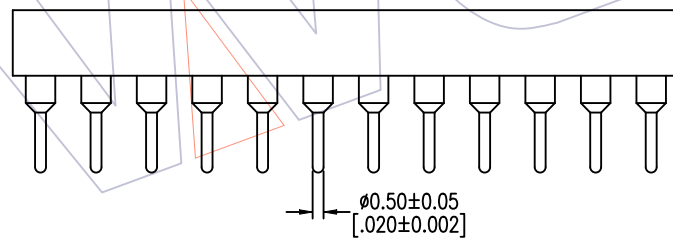
Recommended P.C.B Layout(Top Side)
 (PCB BOARD TOLERANCE ±0.05)



Ordering Information

7110-302 XX S XX 074 X 1

Row of Pitch 2=15.24mm
 No. of Pin See tab
 Contact Plating S0=Gold Flash/Tin, S3=10u"Gold/Tin, S4=15u"Gold/Tin, S5=30u"Gold/Tin, SN=Tin
 Packing T=Tube, A=Tray



Dimensional & Ordering Information

NO. of Poles	Part No.	Dim
		A
24	7110-30224SXX074X1	30.48
28	7110-30228SXX074X1	35.56
32	7110-30232SXX074X1	40.64
36	7110-30236SXX074X1	45.72
40	7110-30240SXX074X1	50.80
42	7110-30242SXX074X1	53.34
48	7110-30248SXX074X1	60.96
50	7110-30250SXX074X1	63.50
52	7110-30252SXX074X1	66.04

REV	DATE	MODIFICATION DESCRIPTION	CHANGE	OPERATION	DRAW	DATE	SCALE	FIT	PART NO.
				X.X	±0.40	JYHuang	2012/11/02	UNIT	mm
				X.XX	±0.25	CHECK	DATE	SIZE	A4
				X.XXX	±0.15			SHEET	1/1
				Angle	± 3'	APPROVE	DATE	PROJ.	SEE TAB
				DIM	TOL				TITLE: 2.54mm IC SOCKET 180° H=3.0 L=7.43 Row of Pitch 15.24

WCON

Http: www.wcon.com

WCON-Dongguan
 Tel: +86 769 85358920
 Fax: +86 769 85358915
 E-mail: sales@wcon.com

WCON-Kunshan
 Tel: +86 512 57468408
 Fax: +86 512 57468468
 E-mail: salesks@wcon.com