

HSF

NOTES:

Current Rating: 1AMP
 Contact Resistance: 30mΩ max
 Withstand Voltage: 250V AC/DC
 Insulation Resistance: 1000MΩ min
 Operation Temperature: -40°C to +105°C

Contact Material: Phosphor
 Bronze(C5191-H)
 Contact plating: Au Or Sn Over Ni
 Insulator Material: PA9T+30%GF(UL94V-0)

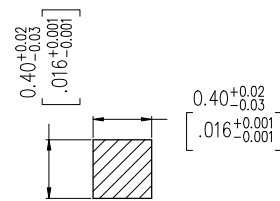
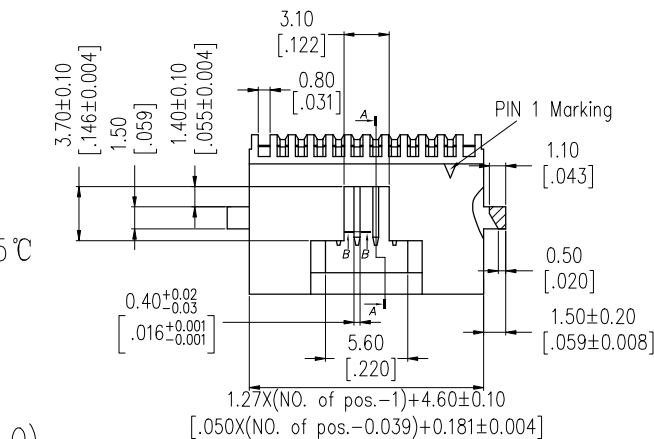
Ordering Information

WF1271-1 WR H XX S0 B T 0

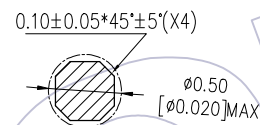
No. of Pins
4-50 PIN

Contact Plating
S0=Gold Flash/Tin

Packing:
T=Tube

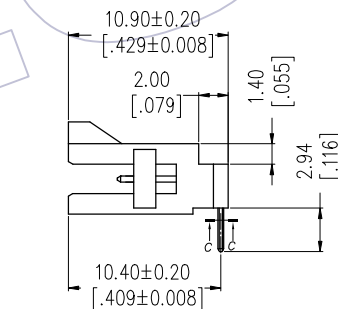
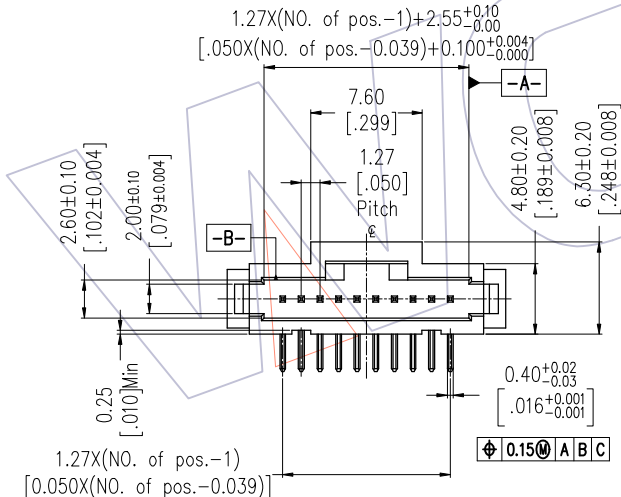
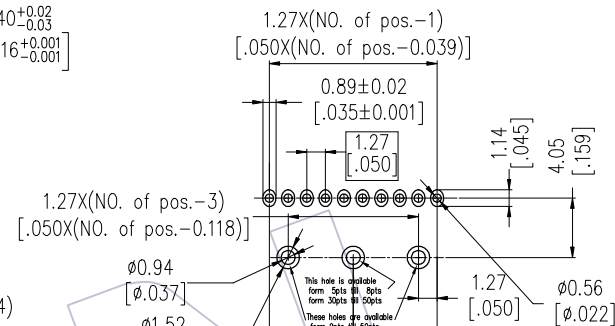


SECTION B-B
SCALE 10:1



SECTION C-C
SCALE 10:1

Recommended P.C.B Layout(Top Side)
 (PCB BOARD TOLERANCE±0.05)



SECTION A-A
SCALE 1:1

REV	DATE	MODIFICATION DESCRIPTION	CHANGE	OPERATION		DRAW	DATE	SCALE	FIT	PART NO.	TITLE:	WCON	
				X.X	±0.40							JYHuang	2016/07/17
				X.XX	±0.25	CHECK	DATE	UNIT	inch	WF1271-1WRHXXSOBTO	1.27 Wafer Conn 90°DIP TYPE With Ear	Tel: +86 769 85358920	Tel: +86 512 57468408
				X.XXX	±0.15	APPROVE	DATE	SIZE	A4			Fax: +86 769 85358915	Fax: +86 512 57468468
AO	2016/07/17	NEW		Angle	± 3'			SHEET	1/1	Customer NO.		E-mail: sales@wcon.com	E-mail: salesks@wcon.com
				DIM	TOL			PROJ.					