

HSF

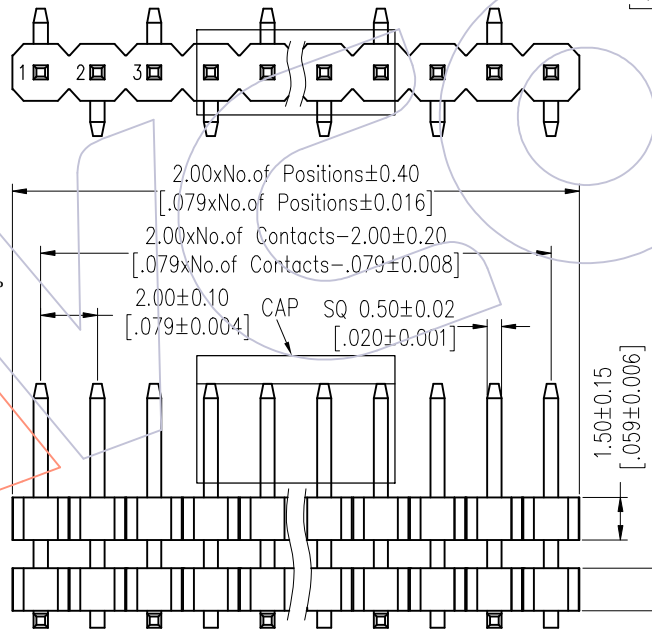
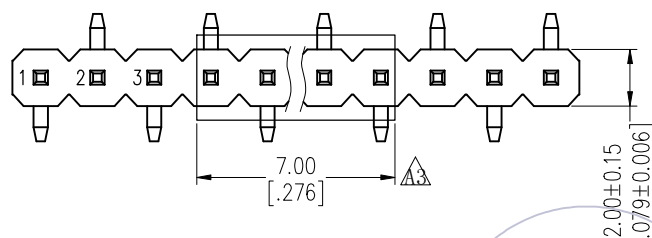
NOTES:

Rated Current: 3.0AMP.(20°C,1*2P-1*15P)
 2.0AMP.(20°C,1*16P-1*40P) $\triangle A4$
 Contact Resistance: 20m Ω Max.
 Withstand Voltage: 500V AC/DC
 Insulation Resistance: 1000M Ω Min.
 Operation Temperature: -40°C to +125°C(Gold Plating) $\triangle A2$ $\triangle A4$
 -40°C to +105°C(Tin Plating) $\triangle A2$ $\triangle A4$
 Contact Material: Copper Alloy
 Contact Plating: Au or Sn Over 30u" Min Ni $\triangle A4$
 Insulator Material: PA9T+G.F UL94V-0 BK

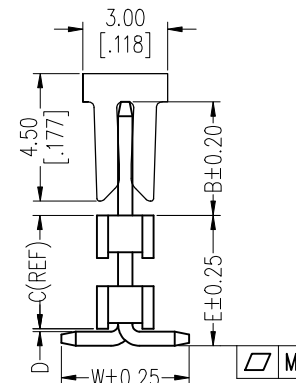
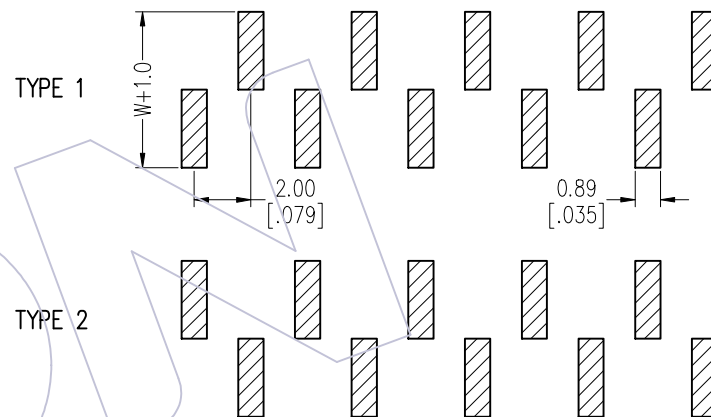
Ordering Information

1215- 2 1 XX XX M XXX C R XX $\triangle A1$

Plastic Layer
 Plastic Row
 No. of Pins
 Per Row: 02-40
 Contact Plating
 G0=Gold Flash
 G3=10u"Au, BG3=8u"PdNi+2u"Au
 G4=15u"Au, BG4=13u"PdNi+2u"Au
 G5=30u"Au, BG5=28u"PdNi+2u"Au
 S0=Gold Flash/Tin
 S3=10u"Au/Sn, P3=8u"PdNi+2u"Au/Sn
 S4=15u"Au/Sn, P4=13u"PdNi+2u"Au/Sn
 S5=30u"Au/Sn, P5=28u"PdNi+2u"Au/Sn $\triangle A4$
 SN=Bright Tin
 SM=Matte Tin
 Series No. 01-99
 Packing
 T=Tube
 P=Tube+CAP
 R=Tape&Reel+CAP
 Insulator Material
 C=PA9T
 Pin Length
 L(See Table)
 Type:
 M:SMT



Recommended P.C.B Layout (Top Side)
 (PCB BOARD TOLERANCE±0.05)
 (PCB Thickness:T=1.60m)



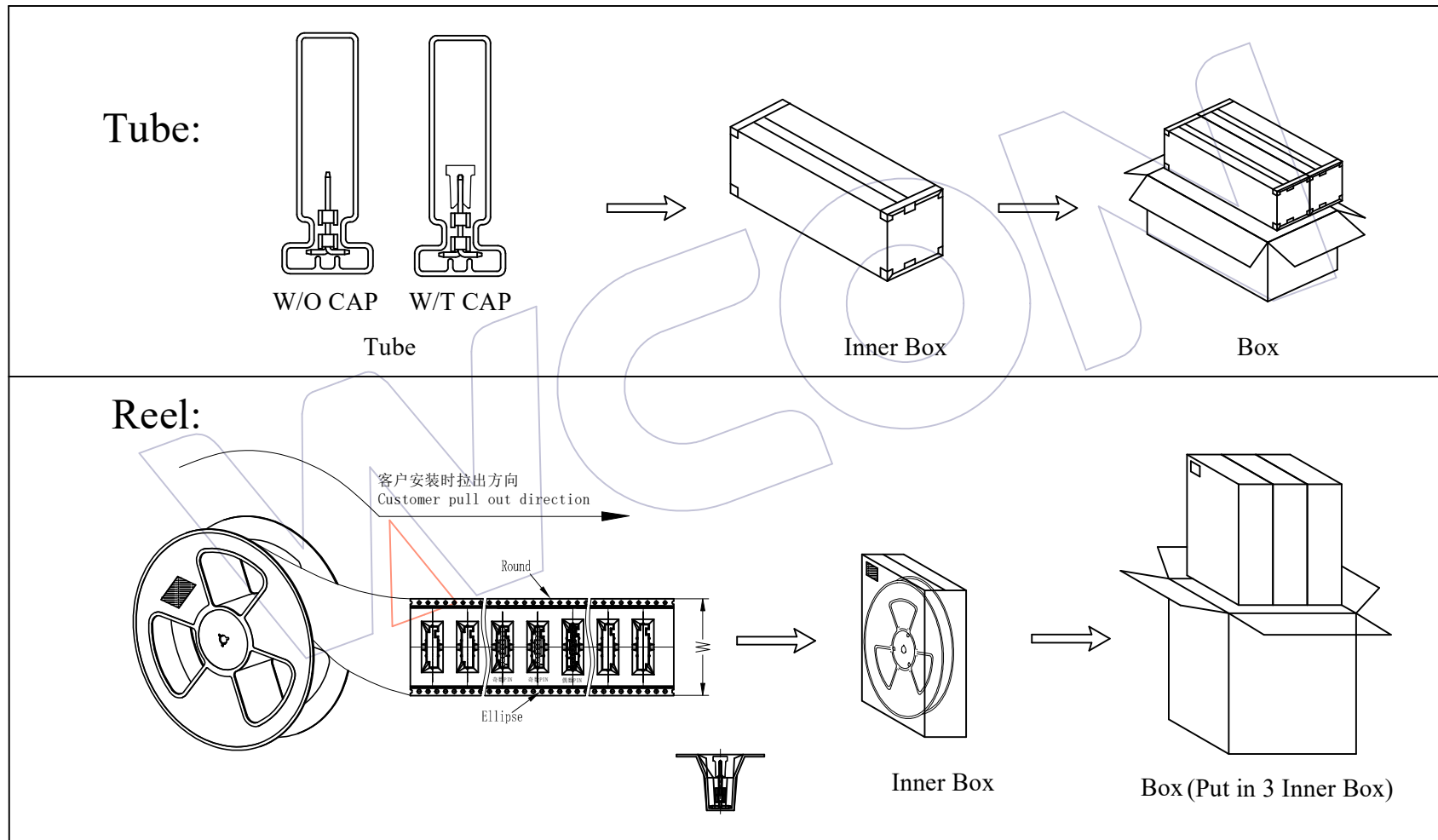
	TITLE	PART NO.	SPEC. $\triangle A2$
$\triangle A2$	PIN	2-15P	16-25P
	M	0.10	0.15
		26-40P	0.20
	TYPE 1	1215-21XXXXMXXXCR01	DUAL/ODD PINS
	TYPE 2	1215-21XXXXMXXXCR02	DUAL PINS

REV	DATE	MODIFICATION DESCRIPTION	CHANGE	DIM	TOL	APPROVE	DATE	PROJ.
A4	2025/07/25	Standardization Drawing	CP			DRAW	DATE	SCALE
A3	2019/07/20	Modify the CAP	Ding	x.x	±0.40	CP	2025/07/25	UNIT
A2	2018/09/07	Modify	Ding	x.xx	±0.25	CHECK	DATE	SIZE
A0	2012/04/18	NEW	William Chen	x.xxx	±0.15	TANG	2025/07/25	A4
				Angle	± 3°	APPROVE	DATE	SHEET
						Steven Zhao	2025/07/25	1/5

WCON
 Http: www.wcon.com
 WCON-Dongguan
 Tel: +86 769 85358920
 Fax: +86 769 85358915
 E-mail: sales@wcon.com
 WCON-Kunshan
 Tel: +86 512 57468408
 Fax: +86 512 57468468
 E-mail: salesks@wcon.com

HSF

Packing:



A4	2025/07/25	Standardization Drawing	CP	OPERATION	DRAW	DATE	SCALE	Fit	PART NO. 1215-21XXXXMXXCRXX Δ
A3	2019/07/20	Modify the CAP	Ding	x.X ± 0.40	CP	2025/07/25	UNIT	mm	TITLE: PH2.00 SINGLE ROW DOUBLE PLASTIC SMT H=1.5
A2	2018/09/07	Modify	Ding	x.XX ± 0.25 x.XXX ± 0.15	CHECK TANG	DATE 2025/07/25	SIZE	A4	
A0	2012/04/18	NEW	William Chen	Angle $\pm 3^\circ$	APPROVE	DATE	SHEET	2/5	Customer NO.
REV	DATE	MODIFICATION DESCRIPTION	CHANGE	DIM TOL	Steven Zhao	2025/07/25	PROJ.	ϕ \leftarrow	

WCON
Http: www.wcon.com

WCON-Dongguan WCON-Kunshan
Tel: +86 769 85358920 Tel: +86 512 57468408
Fax: +86 769 85358915 Fax: +86 512 57468468
E-mail: sales@wcon.com E-mail: salesks@wcon.com



Packaging Quantity Refers To The Following Table

Table 1

Item	L	E	C	D	W	B	Mating
Standard	8.5	4.3	3.0	0.8	4.5	2.5	2220T/2221/2228
	9.0					3.0	2227T/2228T/2245
	9.5					3.5	2235/2240N/2243C
	10.0					4.0	2240/2243/2245T/2263/2272
	9.5	5.4	4.8	0.1		2.5	2220T/2221/2228
	10.0					3.0	2227T/2228T/2245
	10.5					3.5	2235/2240N/2243C
	11.0					4.0	2240/2243/2245T/2263/2272
	11.8	7.5	6.9	0.1		2.5	2220T/2221/2228
	12.3					3.0	2227T/2228T/2245
	12.8					3.5	2235/2240N/2243C
	13.3					4.0	2240/2243/2245T/2263/2272
	12.8	8.5	7.9	0.1		2.5	2220T/2221/2228
	13.3					3.0	2227T/2228T/2245
	13.8					3.5	2235/2240N/2243C
	14.2					4.0	2240/2243/2245T/2263/2272
	13.8	9.5	8.8	0.2		2.5	2220T/2221/2228
	14.2					3.0	2227T/2228T/2245
	14.8					3.5	2235/2240N/2243C
	15.3					4.0	2240/2243/2245T/2263/2272
16.3	12.0	11.4	0.1	2.5	2220T/2221/2228		
16.8				3.0	2227T/2228T/2245		
17.3				3.5	2235/2240N/2243C		
17.8				4.0	2240/2243/2245T/2263/2272		
Alternate							

PINS	Q'ty/Tube	Q'ty/Inner Box	Q'ty/Box
4	69	5,520	11,040
5	55	4,400	8,800
6	48	3,840	7,680
7	40	3,200	6,400
8	35	2,800	5,600
9	31	2,480	4,960
10	28	2,240	4,480
11	25	2,000	4,000
12	23	1,840	3,680
13	21	1,680	3,360
14	20	1,600	3,200
15	19	1,520	3,040
16	17	1,360	2,720
17	16	1,280	2,560
18	15	1,200	2,400
19	15	1,200	2,400
20	14	1,120	2,240
21	13	1,040	2,080
22	13	1,040	2,080


PINS	Q'ty/Tube	Q'ty/Inner Box	Q'ty/Box
23	12	960	1,920
24	11	880	1,760
25	11	880	1,760
26	11	880	1,760
27	10	800	1,600
28	10	800	1,600
29	9	720	1,440
30	9	720	1,440
31	9	720	1,440
32	9	720	1,440
33	8	640	1,280
34	8	640	1,280
35	8	640	1,280
36	8	640	1,280
37	7	560	1,120
38	7	560	1,120
39	7	560	1,120
40	7	560	1,120

REV	DATE	MODIFICATION DESCRIPTION	CHANGE	DIM	TOL	APPROVE	DATE	PROJ.
A4	2025/07/25	Standardization Drawing	CP			OPERATION	DATE	SCALE
A3	2019/07/20	Modify the CAP	Ding	x.x	±0.40	DRAW	2025/07/25	Fit
A2	2018/09/07	Modify	Ding	x.xx	±0.25	CHECK	DATE	UNIT
A0	2012/04/18	NEW	William Chen	x.xxx	±0.15	TANG	2025/07/25	mm
				Angle	± 3'	APPROVE	DATE	SIZE
						Steven Zhao	2025/07/25	A4
								3/5
								PROJ.



Http: www.wcon.com

WCON-Dongguan Tel: +86 769 85358920 Fax: +86 769 85358915 E-mail: sales@wcon.com	WCON-Kunshan Tel: +86 512 57468408 Fax: +86 512 57468468 E-mail: salesks@wcon.com
---	--

PART NO.
1215-21XXXXMXXXCRXX 

TITLE:
PH2.00 SINGLE ROW
DOUBLE PLASTIC SMT H=1.5

Customer NO.



Packaging Quantity Refers To The Following Table

E=4.3

PINS	W	Q'ty/Reel	Q'ty/Inner Box	Q'ty/Box
2	16	550	2,200	6,600
3	24	550	1,650	4,950
4	24	550	1,650	4,950
5	24	550	1,650	4,950
6	24	550	1,650	4,950
7	32	550	1,100	3,300
8	32	550	1,100	3,300
9	44	550	1,100	3,300
10	44	550	1,100	3,300
11	44	550	1,100	3,300
12	44	550	1,100	3,300
13	44	550	1,100	3,300
14	44	550	1,100	3,300
15	56	550	550	1,650
16	56	550	550	1,650
17	56	550	550	1,650
18	56	550	550	1,650
19	56	550	550	1,650
20	56	550	550	1,650
21	72	550	550	1,650
22	72	550	550	1,650
23	72	550	550	1,650
24	72	550	550	1,650
25	72	550	550	1,650
26	72	550	550	1,650
27	72	550	550	1,650
28	72	550	550	1,650
29	88	550	550	1,650
30	88	550	550	1,650

E=5.4,B=3.5/3.0/2.5

PINS	W	Q'ty/Reel	Q'ty/Inner Box	Q'ty/Box
2	24	500	1,500	4,500
3	24	500	1,500	4,500
4	24	500	1,500	4,500
5	24	500	1,500	4,500
6	32	500	1,000	3,000
7	32	500	1,000	3,000
8	44	500	1,000	3,000
9	44	500	1,000	3,000
10	44	500	1,000	3,000
11	44	500	1,000	3,000
12	44	500	1,000	3,000
13	44	500	1,000	3,000
14	56	500	500	1,500
15	56	500	500	1,500
16	56	500	500	1,500
17	56	500	500	1,500
18	56	500	500	1,500
19	56	500	500	1,500
20	72	500	500	1,500
21	72	500	500	1,500
22	72	500	500	1,500
23	72	500	500	1,500
24	72	500	500	1,500
25	72	500	500	1,500
26	72	500	500	1,500
27	72	500	500	1,500
28	88	500	500	1,500
29	88	500	500	1,500
30	88	500	500	1,500

E=5.4,B=4.0

PINS	W	Q'ty/Reel	Q'ty/Inner Box	Q'ty/Box
2	24	450	1,350	4,050
3	24	450	1,350	4,050
4	24	450	1,350	4,050
5	24	450	1,350	4,050
6	32	450	900	2,700
7	32	450	900	2,700
8	44	450	900	2,700
9	44	450	900	2,700
10	44	450	900	2,700
11	44	450	900	2,700
12	44	450	900	2,700
13	44	450	900	2,700
14	56	450	450	1,350
15	56	450	450	1,350
16	56	450	450	1,350
17	56	450	450	1,350
18	56	450	450	1,350
19	56	450	450	1,350
20	72	450	450	1,350
21	72	450	450	1,350
22	72	450	450	1,350
23	72	450	450	1,350
24	72	450	450	1,350
25	72	450	450	1,350
26	72	450	450	1,350
27	72	450	450	1,350
28	88	450	450	1,350
29	88	450	450	1,350
30	88	450	450	1,350

E=7.5

PINS	W	Q'ty/Reel	Q'ty/Inner Box	Q'ty/Box
2	24	290	870	2,610
3	24	290	870	2,610
4	24	290	870	2,610
5	24	290	870	2,610
6	32	290	580	1,740
7	44	290	580	1,740
8	44	290	580	1,740
9	44	290	580	1,740
10	44	290	580	1,740
11	44	290	580	1,740
12	44	290	580	1,740
13	56	290	290	870
14	56	290	290	870
15	56	290	290	870
16	56	290	290	870
17	56	290	290	870
18	56	290	290	870
19	72	290	290	870
20	72	290	290	870
21	72	290	290	870
22	72	290	290	870
23	72	290	290	870
24	72	290	290	870
25	72	290	290	870
26	72	290	290	870
27	88	290	290	870
28	88	290	290	870
29	88	290	290	870
30	88	290	290	870

A4	2025/07/25	Standardization Drawing	CP	OPERATION	DRAW	DATE	SCALE	Fit	PART NO.
A3	2019/07/20	Modify the CAP	Ding	x.x ±0.40	CP	2025/07/25	UNIT	mm	1215-21XXXXMXXXCRXX Δ
A2	2018/09/07	Modify	Ding	x.xx ±0.25	CHECK	DATE	SIZE	A4	TITLE:
A0	2012/04/18	NEW	William Chen	x.xxx ±0.15	TANG	2025/07/25	SHEET	4/5	PH2.00 SINGLE ROW DOUBLE PLASTIC SMT H=1.5
REV	DATE	MODIFICATION DESCRIPTION	CHANGE	Angle ± 3°	APPROVE	DATE	PROJ.	Φ \leftarrow	Customer NO.
				DIM TOL	Steven Zhao	2025/07/25			



Http: www.wcon.com

WCON-Dongguan Tel: +86 769 85358920 Fax: +86 769 85358915 E-mail: sales@wcon.com	WCON-Kunshan Tel: +86 512 57468408 Fax: +86 512 57468468 E-mail: salesks@wcon.com
---	--



Packaging Quantity Refers To The Following Table

E=8.5

PINS	W	Q'ty/Reel	Q'ty/Inner Box	Q'ty/Box
2	24	250	750	2,250
3	24	250	750	2,250
4	24	250	750	2,250
5	32	250	500	1,500
6	32	250	500	1,500
7	44	250	500	1,500
8	44	250	500	1,500
9	44	250	500	1,500
10	44	250	500	1,500
11	44	250	500	1,500
12	44	250	500	1,500
13	56	250	250	750
14	56	250	250	750
15	56	250	250	750
16	56	250	250	750
17	56	250	250	750
18	56	250	250	750
19	72	250	250	750
20	72	250	250	750
21	72	250	250	750
22	72	250	250	750
23	72	250	250	750
24	72	250	250	750
25	72	250	250	750
26	72	250	250	750
27	88	250	250	750
28	88	250	250	750
29	88	250	250	750
30	88	250	250	750

E=9.5

PINS	W	Q'ty/Reel	Q'ty/Inner Box	Q'ty/Box
2	24	250	750	2,250
3	24	250	750	2,250
4	24	250	750	2,250
5	32	250	500	1,500
6	32	250	500	1,500
7	44	250	500	1,500
8	44	250	500	1,500
9	44	250	500	1,500
10	44	250	500	1,500
11	44	250	500	1,500
12	56	250	250	750
13	56	250	250	750
14	56	250	250	750
15	56	250	250	750
16	56	250	250	750
17	56	250	250	750
18	72	250	250	750
19	72	250	250	750
20	72	250	250	750
21	72	250	250	750
22	72	250	250	750
23	72	250	250	750
24	72	250	250	750
25	72	250	250	750
26	88	250	250	750
27	88	250	250	750
28	88	250	250	750
29	88	250	250	750
30	88	250	250	750

E=12.0

PINS	W	Q'ty/Reel	Q'ty/Inner Box	Q'ty/Box
2	24	210	630	1,890
3	24	210	630	1,890
4	32	210	420	1,260
5	32	210	420	1,260
6	44	210	420	1,260
7	44	210	420	1,260
8	44	210	420	1,260
9	44	210	420	1,260
10	44	210	420	1,260
11	56	210	210	630
12	56	210	210	630
13	56	210	210	630
14	56	210	210	630
15	56	210	210	630
16	56	210	210	630
17	72	210	210	630
18	72	210	210	630
19	72	210	210	630
20	72	210	210	630
21	72	210	210	630
22	72	210	210	630
23	72	210	210	630
24	72	210	210	630
25	88	210	210	630
26	88	210	210	630
27	88	210	210	630
28	88	210	210	630
29	88	210	210	630
30	88	210	210	630

A4	2025/07/25	Standardization Drawing	CP	OPERATION	DRAW	DATE	SCALE	Fit	PART NO.
A3	2019/07/20	Modify the CAP	Ding	x.x ±0.40	CP	2025/07/25	UNIT	mm	1215-21XXXXMXXXCRXX
A2	2018/09/07	Modify	Ding	x.xx ±0.25	CHECK	DATE	SIZE	A4	TITLE:
A0	2012/04/18	NEW	William Chen	x.xxx ±0.15	TANG	2025/07/25	SHEET	5/5	PH2.00 SINGLE ROW DOUBLE PLASTIC SMT H=1.5
REV	DATE	MODIFICATION DESCRIPTION	CHANGE	Angle ± 3°	APPROVE	DATE	PROJ.		Customer NO.
				DIM TOL	Steven Zhao	2025/07/25			



WCON-Dongguan Tel: +86 769 85358920 Fax: +86 769 85358915 E-mail: sales@wcon.com

WCON-Kunshan Tel: +86 512 57468408 Fax: +86 512 57468468 E-mail: salesks@wcon.com