

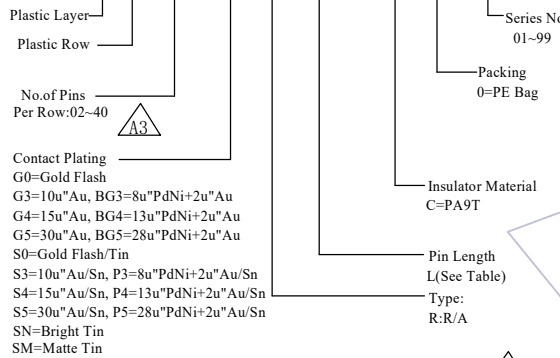
HSF

NOTES:

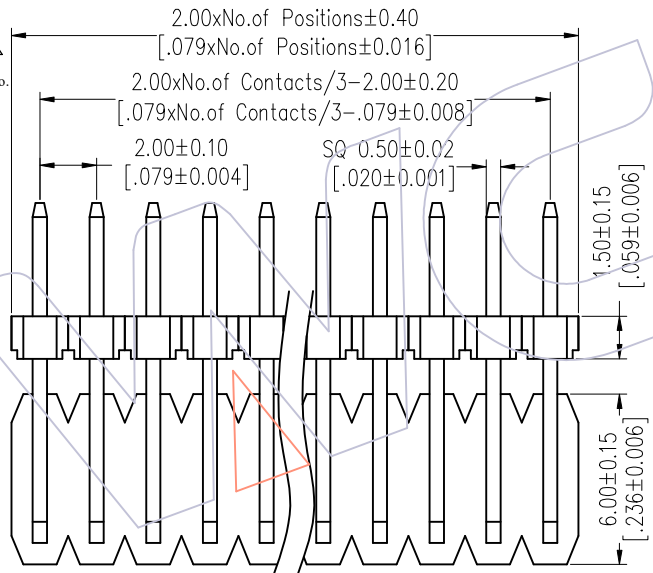
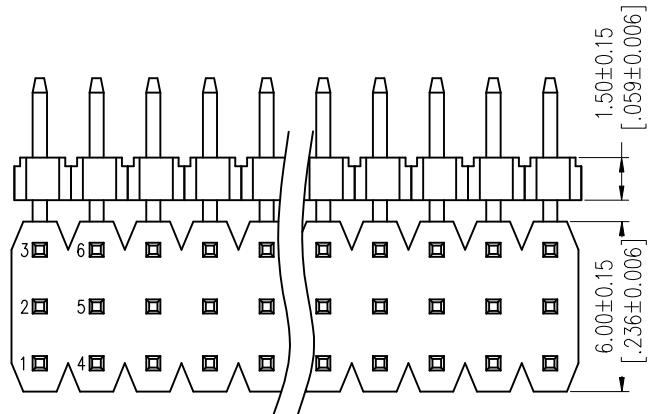
- Rated Current: 3.0AMP.(20°C,3*2P-3*15P)
- 2.0AMP.(20°C,3*16P-3*40P) $\triangle A4$
- Contact Resistance: 20m Ω Max.
- Withstand Voltage: 500V AC/DC
- Insulation Resistance: 1000M Ω Min.
- Operation Temperature: -40°C to +125°C(Gold Plating) $\triangle A2$ $\triangle A4$
- 40°C to +105°C(Tin Plating) $\triangle A2$ $\triangle A4$
- Contact Material: Copper Alloy
- Contact Plating: Au or Sn Over 30u" Min Ni $\triangle A4$
- Insulator Material: PA9T+G.F UL94V-0 BK $\triangle A4$

Ordering Information

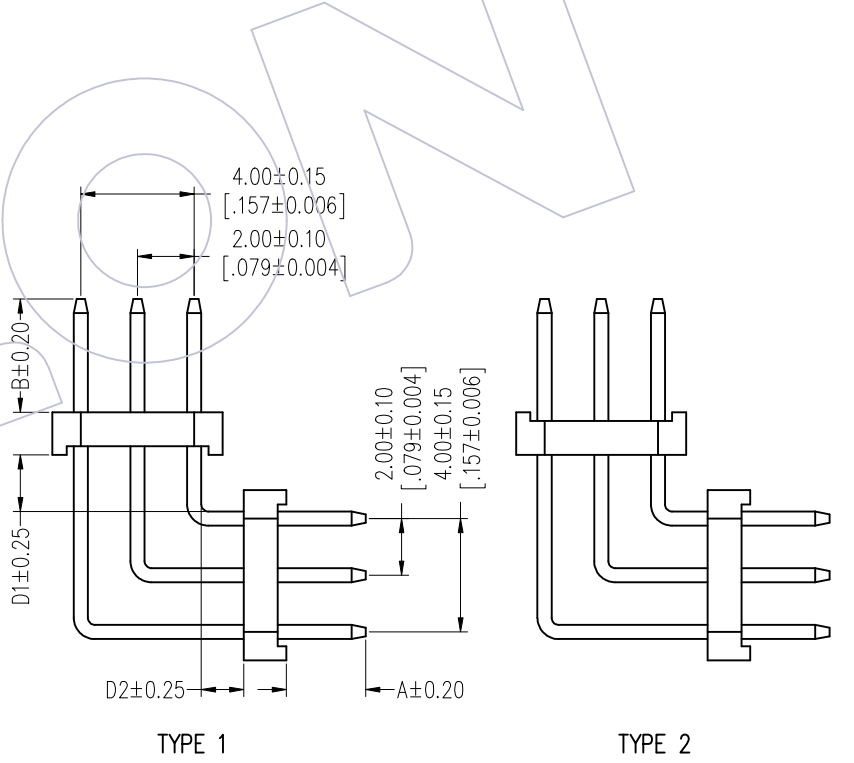
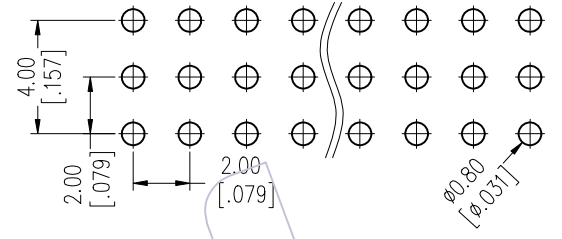
1215- 2 3 XX XX R XXX C 0 XX $\triangle A1$



Item	Pin Length Short/Middle/Long	A	D1	D2	B	Mating
Standard	13.0/17.0/21.0	2.80	1.8	2.8	2.5	2220T/2221/2228
	13.5/17.5/21.5				3.0	2227T/2228T/2245
	14.0/18.0/22.0				3.5	2235/2240N/2243C
	14.5/18.5/22.5				4.0	2240/2243/2245T/2263/2272
Standard	12.0/16.0/20.0	2.0 (THR)	1.8	2.8	2.5	2220T/2221/2228
	12.5/16.5/20.5				3.0	2227T/2228T/2245
	13.0/17.0/21.0				3.5	2235/2240N/2243C
	13.5/17.5/21.5				4.0	2240/2243/2245T/2263/2272
Alternate						



Recommended P.C.B Layout (Top Side)
(PCB BOARD TOLERANCE±0.05)
(PCB Thickness: T=1.60m)



A4	2025/07/29	Standardization Drawing	CP	OPERATION	DRAW	DATE	SCALE	Fit	PART NO.
A3	2020/06/12	Modify Pin 03~40P	DuYing	x.X ±0.40	CP	2025/07/29	UNIT	mm	1215-23XXXXRXXXCOXX $\triangle A1$
A2	2019/03/04	Modify	Ding	x.XX ±0.25	CHECK	DATE	SIZE	A4	TITLE:
A0	2012/04/18	NEW	William Chen	x.XXX ±0.15	TANG	2025/07/29	SHEET	1/2	PH2.00 THREE ROW DOUBLE PLASTIC 90° H=1.5 MIDDLE BENDING
REV	DATE	MODIFICATION DESCRIPTION	CHANGE	Angle ± 3°	APPROVE	DATE	PROJ.		Customer NO.
				DIM TOL	Steven Zhao	2025/07/29			



Http: www.wcon.com

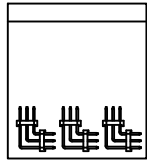
<p>WCON-Dongguan Tel: +86 769 85358920 Fax: +86 769 85358915 E-mail: sales@wcon.com</p>	<p>WCON-Kunshan Tel: +86 512 57468408 Fax: +86 512 57468468 E-mail: salesks@wcon.com</p>
---	--

HSF

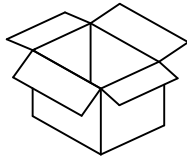
Packing:

Packaging Quantity Refers To The Following Table

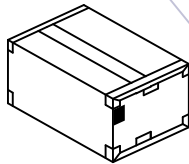
PE Bag:



PE Bag



Inner Box



Box

PINS /Row	Q'ty/Bag (12.0 ≤ L ≤ 14.5)
2	1000
3	600
4	500
5	400
6	300
7	300
8	300
9	200
10	200
11	200
12	200
13	100
14	100
15	100
16	100
17	100
18	100
19	100
20	100
21	100

PINS /Row	Q'ty/Bag (12.0 ≤ L ≤ 14.5)
22	100
23	100
24	50
25	50
26	50
27	50
28	50
29	50
30	50
31	50
32	50
33	50
34	50
35	50
36	50
37	50
38	50
39	50
40	50

A4	2025/07/29	Standardization Drawing	CP	OPERATION	DRAW	DATE	SCALE	Fit	PART NO. 1215-23XXXXRXXXCOXX
A3	2020/06/12	Modify Pin 03~40P	DuYing	x.x ±0.40	CP	2025/07/29	UNIT	mm	TITLE: PH2.00 THREE ROW DOUBLE PLASTIC 90° H=1.5 MIDDLE BENDING
A2	2019/03/04	Modify	Ding	x.xx ±0.25	CHECK	DATE	SIZE	A4	
A0	2012/04/18	NEW	William Chen	x.xxx ±0.15	TANG	2025/07/29	SHEET	2/2	Customer NO.
REV	DATE	MODIFICATION DESCRIPTION	CHANGE	Angle ± 3°	APPROVE Steven Zhao	DATE	PROJ.		
				DIM TOL		2025/07/29			

Http: www.wcon.com

WCON-Dongguan Tel: +86 769 85358920 Fax: +86 769 85358915 E-mail: sales@wcon.com	WCON-Kunshan Tel: +86 512 57468408 Fax: +86 512 57468468 E-mail: salesks@wcon.com
---	--