

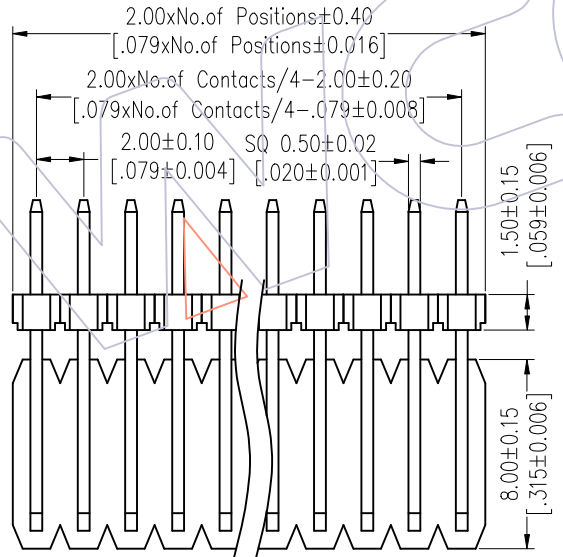
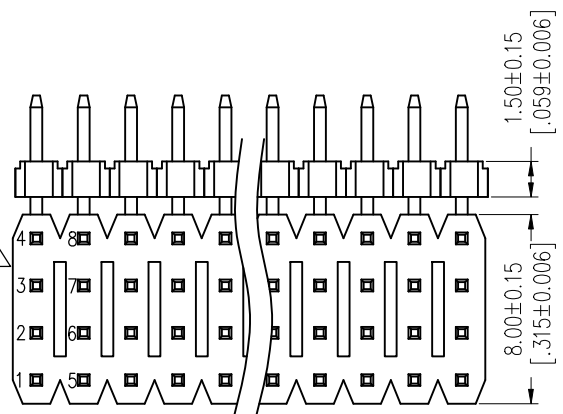
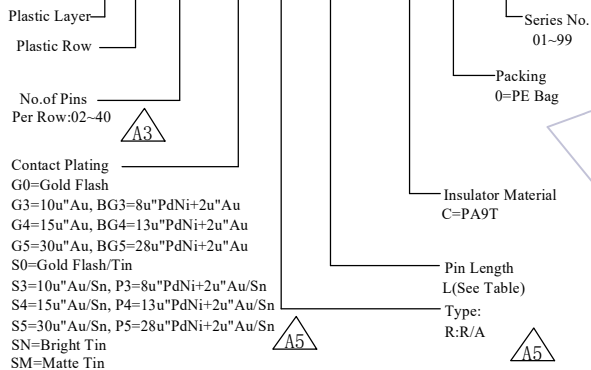
# HSF

**NOTES:**

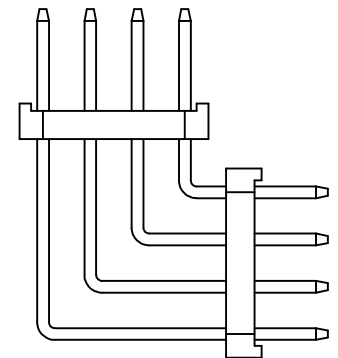
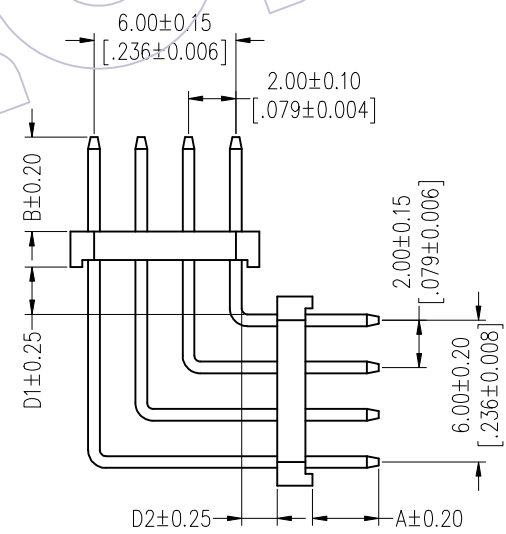
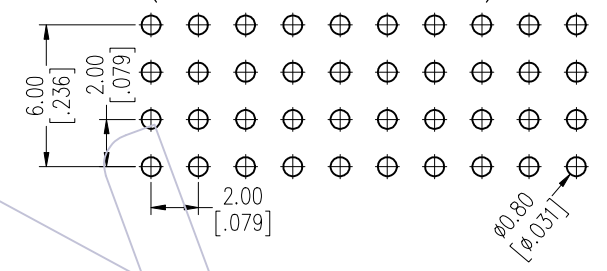
Rated Current: 3.0AMP.(20°C,4\*2P-4\*15P)  
 2.0AMP.(20°C,4\*16P-4\*40P) A5  
 Contact Resistance: 20mΩ Max.  
 Withstand Voltage: 500V AC/DC  
 Insulation Resistance: 1000MΩ Min.  
 Operation Temperature: -40°C to +125°C(Gold Plating) A2 A5  
 -40°C to +105°C(Tin Plating)  
 Contact Material: Copper Alloy  
 Contact Plating: Au or Sn Over 30u" Min Ni A5  
 Insulator Material: PA9T+G.F UL94V-0 BK A5

## Ordering Information

1215- 2 4 XX XX R XXX C 0 XX A1



Recommended P.C.B Layout (Top Side)  
 (PCB BOARD TOLERANCE±0.05)  
 (PCB Thickness: T=1.60m)



Item	Pin Length Short/Middle1/Middle2/Long	A	D1	D2	B	Mating	
Standard	13.0/17.0/21.0/25.0	2.80	1.8	2.8	2.5	2220T/2221/2228	
	13.5/17.5/21.5/25.5				3.0	2227T/2228T/2245	
	14.0/18.0/22.0/26.0				3.5	2235/2240N/2243C	
	14.5/18.5/22.5/26.5				4.0	2240/2243/2245T/2263/2272	
Standard	12.0/16.0/20.0/24.0	2.0 (THR)	1.8	2.8	2.5	2220T/2221/2228	
	12.5/16.5/20.5/24.5				3.0	2227T/2228T/2245	
	13.0/17.0/21.0/25.00				3.5	2235/2240N/2243C	
	13.5/17.5/21.5/25.5				4.0	2240/2243/2245T/2263/2272	
Alternate							

A5	2025/07/29	Standardization Drawing	CP	OPERATION	DRAW	DATE	SCALE	Fit	PART NO.
A4	2025/03/21	Modify Drawing	CP	x.X ±0.40	CP	2025/07/29	UNIT	mm	1215-24XXXXRXXXCOXX <span style="float:right">A5</span>
A3	2020/06/12	Modify Pin 04~40P	DuYing	x.XX ±0.25	CHECK	DATE	SIZE	A4	TITLE:
A0	2012/04/18	NEW	William Chen	x.XXX ±0.15	TANG	2025/07/29	SHEET	1/2	PH2.00 FOUR ROW DOUBLE PLASTIC 90° H=1.5 MIDDLE BENDING
REV	DATE	MODIFICATION DESCRIPTION	CHANGE	Angle ± 3°	APPROVE	DATE	PROJ.		Customer NO.
				DIM TOL	Steven Zhao	2025/07/29			



Http: [www.wcon.com](http://www.wcon.com)

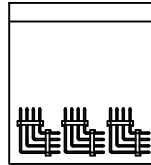
WCON-Dongguan Tel: +86 769 85358920 Fax: +86 769 85358915 E-mail: <a href="mailto:sales@wcon.com">sales@wcon.com</a>	WCON-Kunshan Tel: +86 512 57468408 Fax: +86 512 57468468 E-mail: <a href="mailto:salesks@wcon.com">salesks@wcon.com</a>
---	--

**HSF**

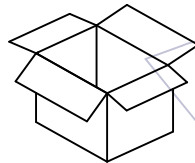
**Packing:**

**Packaging Quantity Refers To The Following Table**

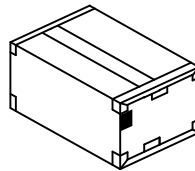
**PE Bag:**



PE Bag



Inner Box



Box

PINS /Row	Q'ty/Bag (12.0≤L≤14.5)
2	800
3	500
4	300
5	300
6	200
7	200
8	200
9	100
10	100
11	100
12	100
13	100
14	100
15	100
16	100
17	100
18	50
19	50
20	50
21	50

PINS /Row	Q'ty/Bag (12.0≤L≤14.5)
22	50
23	50
24	50
25	50
26	50
27	50
28	50
29	50
30	50
31	50
32	50
33	50
34	50
35	30
36	30
37	30
38	30
39	30
40	30

A5	2025/07/29	Standardization Drawing	CP	OPERATION	DRAW	DATE	SCALE	Fit	PART NO.
A4	2025/03/21	Modify Drawing	CP	x.X ±0.40	CP	2025/07/29	UNIT	mm	1215-24XXXXRXXXCOXX ▲
A3	2020/06/12	Modify Pin 04~40P	DuYing	x.XX ±0.25	CHECK	DATE	SIZE	A4	TITLE:
A0	2012/04/18	NEW	William Chen	x.XXX ±0.15	TANG	2025/07/29	SHEET	2/2	PH2.00 FOUR ROW DOUBLE PLASTIC 90° H=1.5 MIDDLE BENDING
REV	DATE	MODIFICATION DESCRIPTION	CHANGE	Angle ± 3°	APPROVE	DATE	PROJ.	⊕	Customer NO.
				DIM TOL	Steven Zhao	2025/07/29			

**WCON**

Http: www.wcon.com

WCON-Dongguan Tel: +86 769 85358920 Fax: +86 769 85358915 E-mail: sales@wcon.com	WCON-Kunshan Tel: +86 512 57468408 Fax: +86 512 57468468 E-mail: salesks@wcon.com
---	--