

## 2185F Series (Mating with 1115/1120/1125) 2185F系列 (互配系列: 1115/1120/1125)

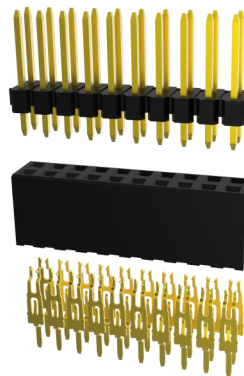
2.54mm pitch/board-to-board Connector 2.54mm间距/板到板连接器

### Overview

The 2.54mm pitch female 2185F series is a general purpose connector that is reliable, easy to install, and comes in a variety of sizes and dimensions to suit different application requirements. When used in conjunction with a pin header, it constitutes a board-to-board connection in electronic equipment and ensures the transmission of current and signals.

### 概述

2.54mm间距排母2185F系列是一款通用的连接器，它可靠、易于安装，具有不同规格和尺寸以适用不同应用需求，通过与排针的配合适用，构成了电子设备中的板对板连接，确保了电流和信号的传输。



Two-point contact  
两点接触

### Features and Benefits

- Low cost: relatively low cost compared with ordinary row mother
- Easy to install: easy to install with jack type contact
- Durable performance: made of high-quality materials, high strength
- High reliability: the connector is well designed to provide stable and reliable current or signal

### 产品特点

- 低成本：与普通排母的成本相对较低
- 安装方便：采用插孔式接触方式，安装简单
- 耐用性能：采用优质材料制造，强度高
- 高可靠性：连接器设计良好，能够提供稳定的可靠的电流或信号

### Product Applications

- Industrial automation: automation equipment, PLC
- Communication equipment: routers, switches, base station equipment
- Consumer electronics: displays, tablets, televisions
- Home appliances equipment: refrigerators, air conditioners, washing machines

### 应用领域

- 工业自动化：自动化设备、PLC
- 通讯设备：路由器、交换机、基站设备
- 消费电子：显示屏、平板电脑、电视机
- 家电设备：冰箱、空调、洗衣机

### Standard 标准

- EIA-364

### Material 材料

Part/零件	Material/材料	Finish/电镀	UL Flame retardant/阻燃等级
Housing/主体	PA9T	Black/黑色	UL94V-0
Terminal/端子	Copper alloy (C7025)	Au or Tin plated 镀金或镀锡	-

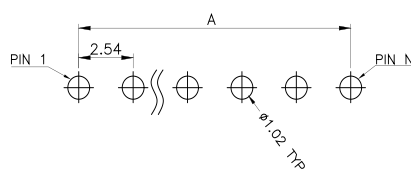
Production Specifications 产品规格

Current rating 额定电流	3.0 A	Operating Temperature Range:-25° C~+85° (including temperature rise) Operating Humidity Range:20-80% 工作温度范围: -40° C~+105° C(含温升) 工作湿度范围: ≤80%	Storage Teroerature: Operating Humidity: 储存温度: 25±5° C 储存湿度: ≤60%
Voltage rating 额定电压	30V		

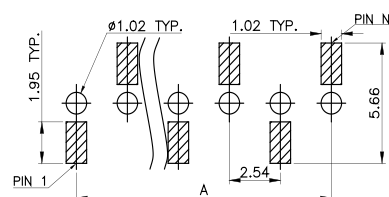
Item 项目	Condition 条件	Specification 规格
Insulation Resistance 绝缘电阻	Measured at 500V DC for 1 minute 测试电压: 500V DC/1分钟	No less than 1000M Ω 不少于1000MΩ
Withstanding voltage 耐电压	Measured at 1000V AC for 1 minute 测试电压: 1000V AC/1分钟	No breakdown, no discharge, leakage current <0.5mA 无击穿、无放电、漏电流<0.5mA
Contact Resistance 接触电阻	Measured at 1mA and no higher than 20mV 用20 mV DC进行测量	Contact resistance: Initial value/ 20 mΩ max After environmental tests/ 30 mΩ max. 接触电阻: 初始值 20 mΩ 以下 测试后 30 mΩ 以下
Vibration Resistance 抗振动	Frequency : 50 ~ 2000 Hz PSD value : 5.35 Gms minimum Duration : 15 minutes/axis Times : Each of three mutually perpendicular planes 频率: 50 ~ 2000 Hz PSD值: 5.35 Gms minimum 时长: 15分钟/轴 次数: 3次	No electrical discontinuity of 1μsorgreater 试验过程中未发生1μs瞬断现象, 且外观无损伤, 电气性能正常
Humidity (Steady state) 湿度	Temperature : 25~65°C Humidity: 90 ~95% (R.H) Duration : 96 hours 温度: 25~65° C 湿度: 90 ~95% (R.H) 时间: 96小时	Contact resistance: Initial value/ 20 mΩ max After environmental tests/ 30 mΩ max. 接触电阻: 初始值 20 mΩ 以下 测试后 30 mΩ 以下
Salt Spray 盐雾	Temperature:35±2°C Humidity:95~98%(R.H) PHValue : 6.5 ~ 7.2 Duration : 24hours 温度: 35±2° C 湿度: 95~98%(R.H) PH值: 6.5~7.2 时间: 24小时	Contact resistance: Initial value/ 20 mΩ max After environmental tests/ 30 mΩ max. 接触电阻: 初始值 20 mΩ 以下 测试后 30 mΩ 以下
Durability(Mating/un-mating) 插拔寿命	300 cycles 循环300次	Contact resistance: Initial value/ 20 mΩ max After environmental tests/ 30 mΩ max. 接触电阻: 初始值 20 mΩ 以下 测试后 30 mΩ 以下

PCB Layout 印刷电路板布局

S/T type 通孔焊接型 (Single Row)

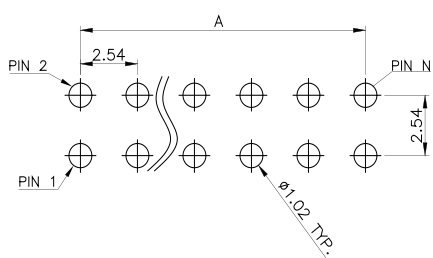


SMT type 表面贴装型 (Single Row)

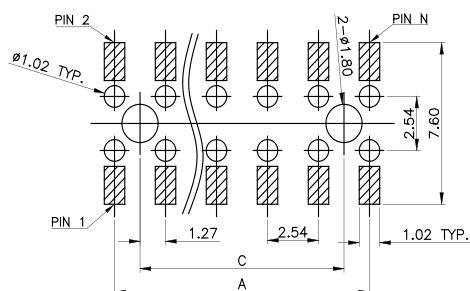


## 2185F Series

### DIP type 通孔焊接型 (Double Row)



### SMT type 表面贴装型 (Double Row)

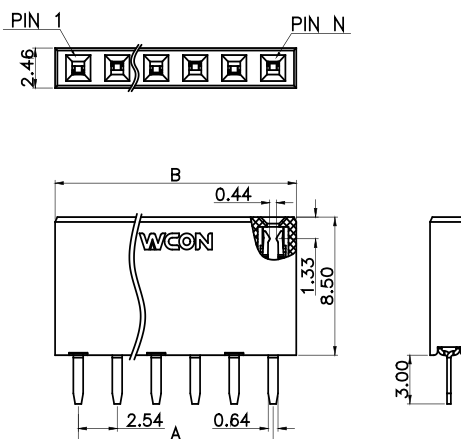


### Ordering Information 订购信息

Circuit 芯数	Part number 型号	Dimensions 尺寸 (mm)		Parkage 包装 Q'ty/Tube 只/管装	Remake 可量产状态
		A	B		
2	2185F-102SXXCYWT1	2.54	5.56	106	*
3	2185F-103SXXCYWT1	5.08	8.10	73	
4	2185F-104SXXCYWT1	7.621	10.64	55	
5	2185F-105SXXCYWT1	10.16	13.18	44	
6	2185F-106SXXCYWT1	12.70	15.72	37	
7	2185F-107SXXCYWT1	15.24	18.26	31	
8	2185F-108SXXCYWT1	17.78	20.80	27	
9	2185F-109SXXCYWT1	20.32	23.34	24	
10	2185F-110SXXCYWT1	22.86	25.88	22	*
11	2185F-111SXXCYWT1	25.40	28.42	20	
12	2185F-112SXXCYWT1	27.94	30.96	18	
13	2185F-113SXXCYWT1	30.48	33.50	16	
14	2185F-114SXXCYWT1	33.05	36.04	15	
15	2185F-115SXXCYWT1	35.56	38.58	14	
16	2185F-116SXXCYWT1	38.10	41.12	13	
17	2185F-117SXXCYWT1	40.64	43.66	12	
18	2185F-118SXXCYWT1	43.18	46.20	11	
19	2185F-119SXXCYWT1	45.72	48.74	11	
20	2185F-120SXXCYWT1	48.26	51.28	10	*

Note: \* stands for mass production . 注: \*代表可量产

### Dimensions 尺寸(DIP)

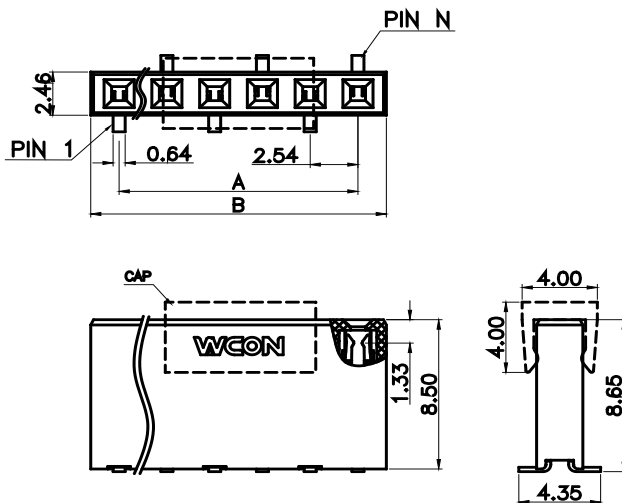


Ordering Information 订购信息

Circuit 芯数	Part number 型号	Dimensions 尺寸 (mm)		Parkage 包装 Q'ty/Tube 只/管装	Remake 可量产状态
		A	B		
2	2185F-102MXXCYWT1	2.54	5.56	106	*
3	2185F-103MXXCYWT1	5.08	8.10	73	
4	2185F-104MXXCYWT1	7.621	10.64	55	
5	2185F-105MXXCYWT1	10.16	13.18	44	
6	2185F-106MXXCYWT1	12.70	15.72	37	
7	2185F-107MXXCYWT1	15.24	18.26	31	
8	2185F-108MXXCYWT1	17.78	20.80	27	
9	2185F-109MXXCYWT1	20.32	23.34	24	
10	2185F-110MXXCYWT1	22.86	25.88	22	*
11	2185F-111MXXCYWT1	25.40	28.42	20	
12	2185F-112MXXCYWT1	27.94	30.96	18	
13	2185F-113MXXCYWT1	30.48	33.50	16	
14	2185F-114MXXCYWT1	33.05	36.04	15	
15	2185F-115MXXCYWT1	35.56	38.58	14	
16	2185F-116MXXCYWT1	38.10	41.12	13	
17	2185F-117MXXCYWT1	40.64	43.66	12	
18	2185F-118MXXCYWT1	43.18	46.20	11	
19	2185F-119MXXCYWT1	45.72	48.74	11	
20	2185F-120MXXCYWT1	48.26	51.28	10	*

Note: \* stands for mass production . 注: \*代表可量产

Dimensions 尺寸(SMT)



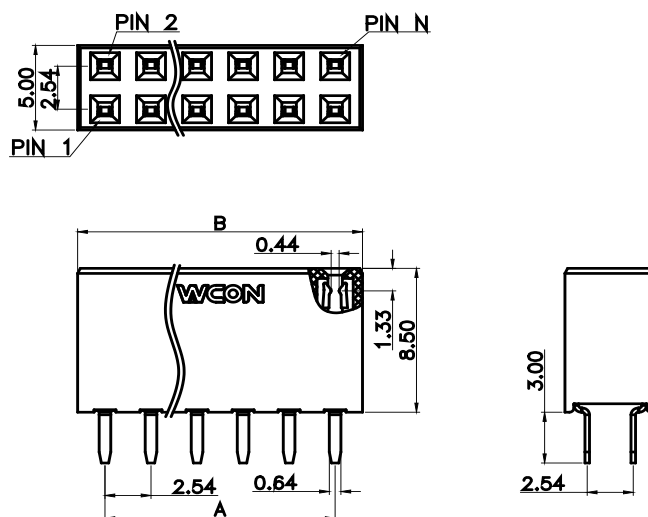
## 2185F Series

### Ordering Information 订购信息

Circuit 芯数	Part number 型号	Dimensions 尺寸 (mm)		Package 包装 Qty/Tube 只/管装	Remake 可量产状态
		A	B		
4	2185F-202SXXCYWT1	2.54	5.56	106	*
6	2185F-203SXXCYWT1	5.08	8.10	73	
8	2185F-204SXXCYWT1	7.621	10.64	55	
10	2185F-205SXXCYWT1	10.16	13.18	44	
12	2185F-206SXXCYWT1	12.70	15.72	37	
14	2185F-207SXXCYWT1	15.24	18.26	31	
16	2185F-208SXXCYWT1	17.78	20.80	27	
18	2185F-209SXXCYWT1	20.32	23.34	24	
20	2185F-210SXXCYWT1	22.86	25.88	22	
22	2185F-211SXXCYWT1	25.40	28.42	20	
24	2185F-212SXXCYWT1	27.94	30.96	18	
26	2185F-213SXXCYWT1	30.48	33.50	16	
28	2185F-214SXXCYWT1	33.05	36.04	15	
30	2185F-215SXXCYWT1	35.56	38.58	14	
32	2185F-216SXXCYWT1	38.10	41.12	13	
34	2185F-217SXXCYWT1	40.64	43.66	12	
36	2185F-218SXXCYWT1	43.18	46.20	11	
38	2185F-219SXXCYWT1	45.72	48.74	11	
40	2185F-220SXXCYWT1	48.26	51.28	10	*

Note: \* stands for mass production . 注: \*代表可量产

### Dimensions 尺寸 (DIP)

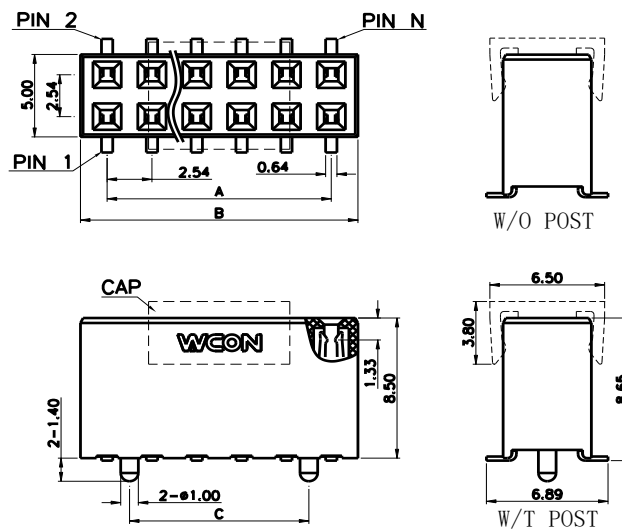


Ordering Information 订购信息

Circuit 芯数	Part number 型号	Dimensions 尺寸 (mm)			Package 包装 Q'ty/Reel 只/卷装	Remake 可量产状态
		A	B	C		
4	2185F-202MXXCYWX1	2.54	5.56	-	800	*
6	2185F-203MXXCYWX1	5.08	8.10	2.54	800	
8	2185F-204MXXCYWX1	7.621	10.64	5.08	800	
10	2185F-205MXXCYWX1	10.16	13.18	7.621	800	
12	2185F-206MXXCYWX1	12.70	15.72	10.16	800	
14	2185F-207MXXCYWX1	15.24	18.26	12.70	800	
16	2185F-208MXXCYWX1	17.78	20.80	15.24	800	
18	2185F-209MXXCYWX1	20.32	23.34	17.78	800	
20	2185F-210MXXCYWX1	22.86	25.88	20.32	800	
22	2185F-211MXXCYWX1	25.40	28.42	22.86	800	
24	2185F-212MXXCYWX1	27.94	30.96	25.40	800	
26	2185F-213MXXCYWX1	30.48	33.50	27.94	800	
28	2185F-214MXXCYWX1	33.05	36.04	30.48	800	
30	2185F-215MXXCYWX1	35.56	38.58	33.05	800	
32	2185F-216MXXCYWX1	38.10	41.12	35.56	800	
34	2185F-217MXXCYWX1	40.64	43.66	38.10	800	
36	2185F-218MXXCYWX1	43.18	46.20	40.64	800	
38	2185F-219MXXCYWX1	45.72	48.74	43.18	800	
40	2185F-220MXXCYWX1	48.26	51.28	45.72	800	*

Note: \* stands for mass production . 注: \*代表可量产

Dimensions 尺寸(SMT)



## 2185F Series

### Model number allocation 型号命名

<b>21</b>	<b>85</b>	<b>F</b>	<b>-</b>	<b>X</b>	<b>XX</b>	<b>X</b>	<b>XX</b>	<b>C</b>	<b>Y</b>	<b>X</b>	<b>X</b>	<b>X</b>
(1)	(2)			(3)	(4)	(5)	(6)	(7)	(8)	(9)	(10)	(11)
(1) Series (系列): 2.54mm排母 2.54mm Female Header						(7) Material (材质): C=PA9T						
(2) Plastic height (塑胶高度): 8.50mm						(8) Terminal contact (端子接触): Y type						
(3) Number of rows (排数): 1=Single Row (单排)、2=Double Row (双排)						(9) Logo code (Logo码): W=With Logo N=Without Logo						
(4) Circuit (位数): 02=2.....40=40P						(10) Packing (包装): T=Tube管装 R=Reel卷装 (SMT)						
(5) Terminal Type (端子型态): S=180° DIP M=180° SMT						(11) Internal code (流水码): SMT (1=With Post 2=Without Post)						
(6) Plating (电镀): G0= Gold Flash G3=10U''Gold G4=15U''Gold G5=30U''Gold S0= Gold Flash/Tin S3=10U''Gold/Tin S4=15U''Gold/Tin S5=30U''Gold/Tin SN=Tin SM=Matte Tin												

## Contact Us 联系我们

维峰电子股份有限公司 (总部)  
WCON ELECTRONICS CO.,LTD(HQ)  
地址:广东省东莞市虎门镇大宁文明路15号  
Add :No.15,Wenming Road,Daning Community, Humen Town,  
Dongguan, Guangdong.523930, China

昆山维康电子有限公司  
KUNSHAN WCON ELECTRONICIS CO.,LTD(East of China)  
地址:昆山市千灯镇汶浦中路169号  
Add : No.169, WenPu Middle Road, QianDeng Town, Kunshan  
City, Jiangsu Province, China

合肥维峰电子有限公司  
HEFEI WCON ELECTRONICIS CO.,LTD  
地址:安徽合肥市高新技术产业开发区绿城科技园E栋2楼  
Add : 2F, Building E, Greentown Science Park,High-tech Develop-  
ment Zone, Hefei, Anhui,China

维康电子(泰国)有限公司  
WCON ELECTRONICS (Thailand) CO.,LTD  
地址:泰国巴真武里府西玛铺县华瓦区洛加纳工业园  
Add: VG3C+H57, Hua Wa, Si Maha Phot District, Prachin Buri  
25140, Thailand

### 销售联系方式 Sales Contacts

国际客户部 International Sales Department  
salesdg01@wcon.com  
salesdg05@wcon.com

大客户专线 Key Account Line  
华南: salesdg28@wcon.com  
华东: salesks@wcon.com

中小客户专线 Small and Medium-sized Account Line  
华南: salesdg10@wcon.com  
华东: salesks01@wcon.com

网络销售 Online sales  
salesdg26@wcon.com



Official Website



Product e-catalog



WeChat Public#



TikTok Public#